

ORDIGINAL

**ORDIGINAL–**  
**Discover our solutions**  
**at a glance**



Contact us:

[info@ordiginal.com](mailto:info@ordiginal.com)

[www.ordiginal.com](http://www.ordiginal.com)

# About **ORDIGINAL**

Established in 2004, we are a prominent value distributor offering a wide range of solutions and support services. With a focus on B2B sales and service, we operate in over 50 countries and collaborate with a vast network of reselling partners who are supported by a dedicated partner success manager in multiple languages. Our expertise lies in not only in speech solutions, particularly from Nuance/Microsoft, but as value added distributor we offer a range of document & communication solutions for our partner eco-system.

Our comprehensive solutions cater to various customer needs, including software as a service (SaaS) cloud-based applications, dictation and transcription hardware, and end-user support services. ORdigiNAL was founded with the vision of going beyond traditional distribution by providing a blend of industry knowledge, technical assistance, product training, and a sustainable recurring revenue model. Our success is attributed to the strong relationships we have built with our partners and resellers, without whom we would not have achieved our current standing in the market.

1. Full Service **Value** Distributor
2. Key **Focus** on Solutions & Services
3. **B2B** Sales model
4. Active in **+50 countries**
5. Dedicated partner success managers in **all regions**

## Our Solutions

We are a **multi-vendor** value distributor providing comprehensive solutions and services.



SPAIS is our speech solutions team. They handle Telephony, Dragon software and more.



DAS means document Automation Solutions. They handle software solutions for your workplace.

## Our Services

### **Pre-Sales**

- Newsletter & Socials
- Demonstration and trials
- Partner Marketing

### **Implementation**

- Installation
- Configuration
- Packaging & deployments

### **Development**

- Integration support (api)
- Scripting
- Connectors

### **Training & Support**

- Certified trainers
- SLA management
- Multi-lingual helpdesk

# ORDIGINAL – your one-stop solution for technical support, sales, and marketing.

## The Technical Help Desk.

We know how important it is to provide top-notch technical support to our customers at ORDiginal. That's why we've created the ORDiginal Help Desk, which serves as your primary support contact for any questions or issues you may have. Our Help Desk is committed to delivering fast and effective assistance to guarantee a smooth experience with our products and services.

- Solution-certified experts
- Multi-region support services for all customers
- Guaranteed SLA's for contracted customers offering responses as low as 1 hour
- Hands-on services including 1-2-1, group & train-the-trainer sessions

## Sales services tailored to your needs

Every reseller partner that we support has a dedicated partner success manager for each solution, who can guide you through our range of offerings and assist you in making informed decisions that are tailored to your unique requirements. The ability to make well-informed choices is crucial when selecting technology solutions. Our Pre-Sales team works closely with you to fully comprehend your specific needs and objectives. They offer in-depth insights into our products and services, helping you evaluate how they align with your requirements. Our ultimate aim is to provide you with all the necessary information to make choices that will lead to your success.

## Simplify your marketing efforts

Elevate your promotional strategies without the hassle of managing an in-house marketing team. Experience the benefits of our subscription-based approach, where you can access our exclusive materials and campaigns. Our convenient portal allows you to instantly download a range of pre-designed campaigns or conveniently submit a ticket for a customized marketing request.

ORDiginal offers her resellers access to top-notch marketing support.

- Designer by the hour
- Ready to use campaigns
- Available in English, French, German and Dutch

## The benefits:



Technical expertise is not necessary. Our Help Desk is available to assist users of all technical skill levels, offering personalized support to meet your specific needs.



Direct your inquiries to our sales department via email at: [sales@ordiginal.com](mailto:sales@ordiginal.com)  
Our team is committed to providing a response within a couple hours.

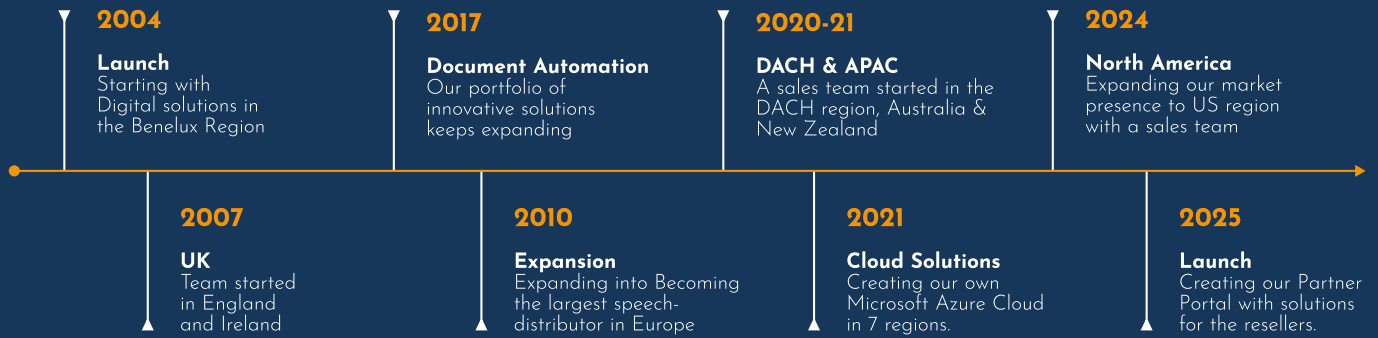


We send out a technical bulletin e-mail with the most important changes and logs. We provide assistance in simple, easy-to-understand terms.

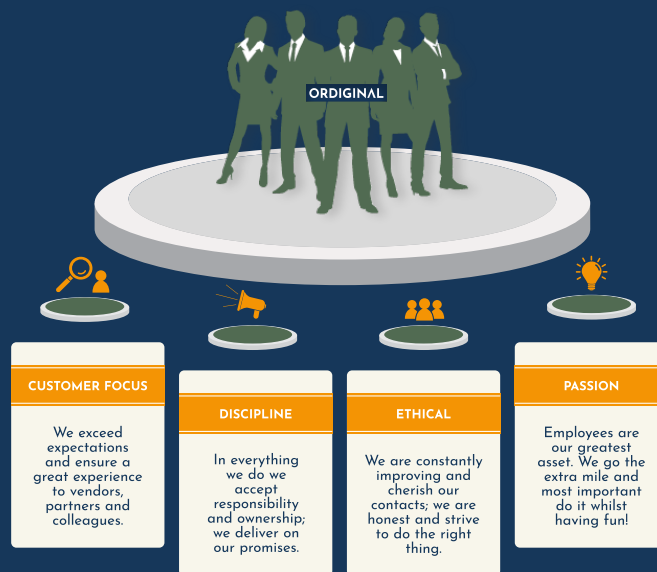


We provide an initial response within a few hours. You will receive a confirmation with a case number immediately after submitting your ticket.

# Our history

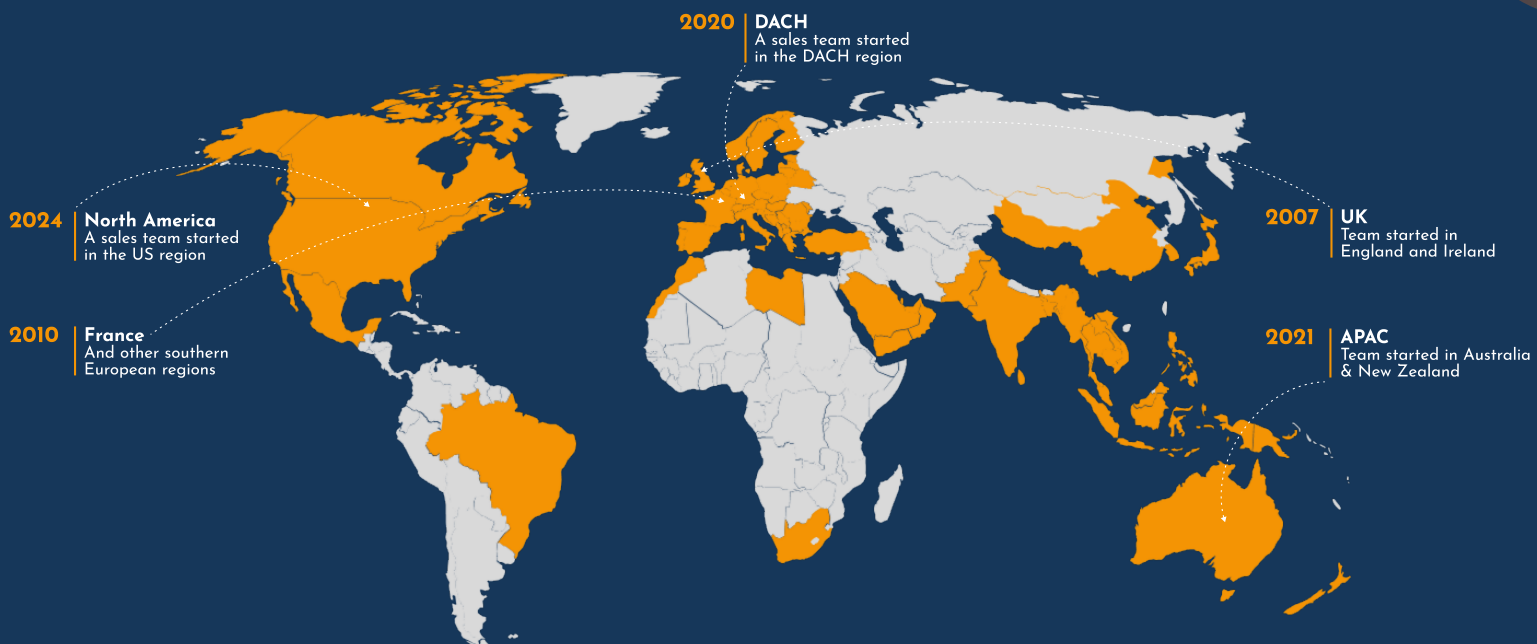


# Our key values



ORdigiNAL selects for its partners the best solutions for greater efficiency in the document and communication process.

# Expansions



# SPEECH PRODUCTIVITY AND AI SOLUTIONS

## ORIGINAL

### Speech recognition:

1. Microsoft® Dragon® Professional Anywhere .....	7
2. Microsoft® Dragon® Professional v16 .....	8
3. Microsoft® Dragon® Legal Anywhere .....	9
4. Microsoft® Dragon® Legal v16 .....	10
5. Microsoft® Dragon® Law Enforcement .....	11
6. Microsoft® Dragon® Anywhere Mobile .....	12
7. Microsoft® Dragon® Medical One .....	13
8. Microsoft® PowerMic Mobile for Dragon® Medical One .....	14
9. Microsoft® DAX Copilot .....	15
10. Microsoft® Dragon® Copilot .....	16
11. Omilon .....	17
12. GoSpeech .....	18
13. CSpeak .....	19

### Cloud:

14. Microsoft® Azure AI .....	20
15. Microsoft® Azure Cloud .....	21

### Telephony:

16. CC4Teams .....	22
17. Operator Connect .....	23
18. Powered by Orange .....	24
19. CallCabinet .....	25

### Dictation:

20. DigtaSoft Pro .....	26
21. NetScribe .....	27
22. SpeechWare .....	28
23. ODMS Cloud by OM systems .....	29

### 3D printing:

24. Materialise Magics .....	30
------------------------------	----

# DOCUMENT AUTOMATION SOLUTIONS

## ORIGINAL

### Print & Capture:

1. Tungsten ControlSuite .....	31
2. Tungsten SafeCom .....	32
3. Printix by Tungsten .....	33
4. YSoft SAFEQ .....	34
5. YSoft SAFEQ Cloud .....	35
6. eCopy ShareScan .....	36
7. Tungsten Capture .....	37
8. Tungsten Express .....	38
9. Tungsten VRS .....	39

### Workflow & Automation:

10. Dr. Connect .....	40
11. Connectyx .....	41
12. Tungsten AP Essentials .....	42
13. Enfocus Switch .....	43
14. Tungsten SignDoc .....	44
15. Tungsten TotalAgility .....	45
16. DocuWare .....	46

### Desktop & Collaboration:

17. Tungsten Power PDF .....	47
18. Enfocus PitStop .....	48
19. Bluebeam .....	49

# Putting words to work with **Dragon Professional Anywhere**

**AI-powered, professional grade speech recognition that integrates directly into enterprise workflows.**

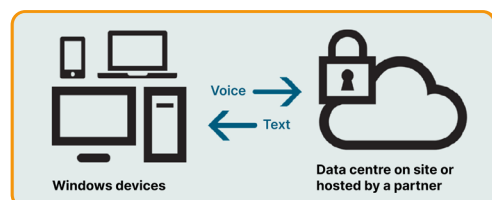
Empower knowledge workers and field professionals to create high-quality documentation with Microsoft® Dragon® Professional Anywhere cloud hosted speech recognition. Organizations can streamline repetitive and manual documentation processes, while saving time for IT staff and boosting productivity and efficiency for busy professionals across work teams.

Highly scalable and ready-to-use, Dragon Professional Anywhere works across your existing infrastructure of Windows-based devices, including virtualized and remote-access PCs. The lightweight Windows client application downloads and installs in minutes and provides an encrypted connection to its hosting infrastructure, Microsoft Azure. Dragon Professional Anywhere can be customized to include sector specific terms, phrases, and formatting rules that ensure a fast and accurate speech recognition experience. Additional features include customizable voice commands and Auto-Texts, navigation and voice-based correction.

## **Easy to install, even easier to use.**

Dragon Professional Anywhere can be installed on Windows-based enterprise workstations or laptops in just minutes without the need for complex configurations. Once installed, front- and back-office employees alike simply open the app from the Windows Start menu, place the cursor where they want speech-recognized text to appear, and start dictating into Windows-based applications (i.e., Microsoft Outlook, Microsoft Word).

Dragon Professional Anywhere provides fast, accurate, and portable cloudbased enterprise speech recognition across a wide range of Windows devices. And with the included Dragon Anywhere Mobile app, field professionals have even more freedom to dictate from virtually anywhere.



## **Benefits at-a-glance**

- Achieve faster documentation turnaround
- Enable employees to focus on their "real job" rather than administrative work
- Cloud-based technology ensures users have "always latest" access to the latest enhancements
- Extend existing investments and increase quality documentation within enterprise systems
- Eliminate the need for costly transcription services or inefficient manual processes
- Reduce liability risks associated with inaccurate or incomplete documentation
- Ready to use, requires no speech profile training, includes accent detection and automatic microphone calibration
- Simplify IT's job with a solution that's easy to deploy, maintain and centrally manage
- Affordable, subscription-based pricing with little upfront capital investment makes it easier for public and private sector enterprises to plan budgets with predictable expenses

# Speech recognition for businesses **Dragon Professional v16**

## Premier speech-recognition for Windows 11 and 10.

Designed for knowledge workers and field employees in the private and public sectors, Dragon Professional v16 empowers professionals – whether sole practitioners or part of an enterprise – to create high-quality documentation faster and more efficiently, while saving time and money.

Today's professionals are challenged with creating outstanding documents. And if not completed correctly or efficiently, this can hamper report quality, employee productivity, and increase costs and compliance risks. Dragon Professional v16 empowers staff with a faster and more accurate way to create documents, spreadsheets, and presentations, or fill out form-based reports—in the office or on the road—all by voice. Use robust transcription tools to eliminate reliance on outsourced services. Or create and share powerful voice commands to shortcut repetitive, manual processes for additional productivity gains.

With Deep Learning technology, Dragon learns a single speaker's voice, achieving recognition accuracy unmatched by general-purpose speech recognition tools. This accuracy extends to users with accents or those working in open office or mobile environments. And for enterprise users, the Nuance Management Center easily deploys and centrally manages Dragon across the organization.

## Put your words to work – faster and smarter with professional grade dictation and transcription

### Speed and simplify document creation.

Don't let heavy documentation demands impact productivity, costs, or client service. Dictate documents 3 times faster than typing with 99% recognition accuracy, right from the first use. And since documents are created in a fraction of the time it would take by typing, less time is allocated to paperwork, and more time on profitable tasks.

### Streamline repetitive or manual processes.

Having to type repetitive content or perform multi-step tasks is a drain on productivity. With its powerful voice command capabilities, Dragon makes it easy to automate these tasks. For example, create custom voice commands to insert standard boilerplate text or signatures into documents. Or create timesaving macros to automate multi-step workflows by voice. Once created, they can be shared with other Dragon users within the enterprise or department.

---

#### Key features:

- Developed by Nuance®—a Microsoft® company—ensuring the best Windows 11 experience.
  - Achieve faster documentation turnaround—in the office and on the go.
  - Enable employees to focus on their “real job” rather than administrative work.
  - Eliminate the need for costly transcription services or inefficient manual processes.
  - Improve your business reputation with faster turnaround of high-quality documentation.
  - Simplify IT's job with a solution that's easy to deploy, maintain and centrally manage.
  - Achieve a competitive advantage and a strong ROI.
  - Built for individual professionals and enterprises.
-



# Dragon Legal Anywhere: Revolutionizing Speech Recognition for Legal Professionals on the Go

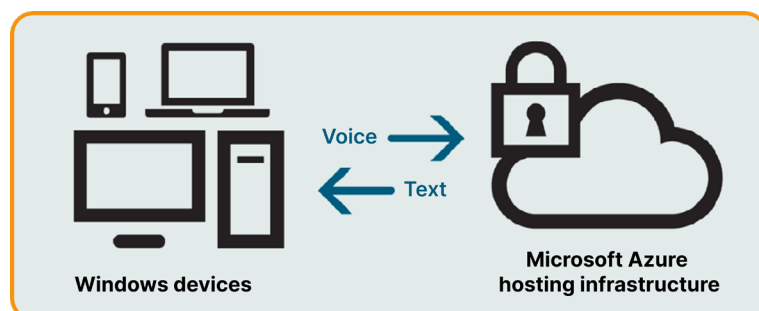
AI-powered, professional grade speech recognition that integrates directly into legal workflows.

Empower attorneys and other legal professionals to create high-quality documentation with Microsoft® Dragon® Legal Anywhere cloud hosted speech recognition. Firms and legal departments can streamline repetitive and manual documentation processes, while saving time for IT staff and boosting productivity and efficiency for busy professionals across work teams.

Highly scalable and ready-to-use, Dragon Legal Anywhere works across your existing infrastructure of Windows-based devices, including virtualized and remote-access PCs. The lightweight Windows client application downloads and installs in minutes and provides an encrypted connection to its hosting infrastructure, Microsoft Azure. In addition to its built in legal vocabulary, Dragon Legal Anywhere can be customized to include sector specific terms, phrases, and formatting rules that ensure a fast and accurate speech recognition experience. Additional features include customizable voice commands and Auto-Texts, navigation and voice-based correction.

## Easy to install, even easier to use.

Dragon Legal Anywhere can be installed on Windows-based enterprise workstations or laptops in just minutes without the need for complex configurations. Once installed, front- and back-office employees alike simply open the app from the Windows Start menu, place the cursor where they want speech- recognized text to appear, and start dictating into Windowsbased applications (i.e., Microsoft Outlook, Microsoft Word).



## Benefits at-a-glance

- Author briefs, contracts, and other legal documents 3 times faster with a specialized legal vocabulary that maximizes productivity.
- Enable attorneys to focus on client service rather than administrative work.
- Cloud-based technology ensures users have "always latest" access to the latest enhancements.
- Extend existing investments and increase quality documentation within enterprise systems.
- Eliminate the need for costly transcription services or inefficient manual processes.
- Reduce liability risks associated with inaccurate or incomplete documentation.
- Ready to use, requires no speech profile training, includes accent detection and automatic microphone calibration.
- Simplify IT's job with a solution that's easy to deploy, maintain and centrally manage.
- Affordable, subscription-based pricing with little upfront capital investment makes it easier for firms and legal departments to plan budgets with predictable expenses.

# Exploring **Dragon Legal v16**: The Latest Advances in Speech Recognition for Legal Professionals

## Premier legal speech-recognition for Windows 11 and 10.

From solo practitioners to attorneys and legal teams in a firm or legal department – Dragon® Legal v16 is the perfect documentation productivity tool that enables the creation of highquality legal documents in less time, allowing for increased billings and client satisfaction.

Dragon Legal v16 speech recognition software with a legal-specific language model is designed specifically for the legal industry. It enables fast, accurate dictation with robust customization features to improve documentation productivity for legal organizations of all sizes—whether in the office or on the road. Attorneys and other legal professionals can lower transcription costs and reduce dependence on support staff, spending more time with clients and increasing billable hours.

**Legal-specific language model.** Dragon Legal v16 is trained using more than 400 million words from legal documents—delivering optimal recognition accuracy for dictation of legal terms right from the start. To further increase accuracy, legal professionals can create, import, and share custom word lists relevant to clients and areas of specialty. Dragon also enables automatic formatting of legal citations.

**Easy batch processing and post-editing of transcriptions.** With Dragon Legal v16, you can automatically transcribe into a selected directory and the audio portion of your dictation can be embedded in the document via the AFTA (Auto Transcribe Folder Agent) process. Storing the audio file with the automatically transcribed documents saves time and simplifies editing by the user or a third party.

**Drive productivity with custom commands.** Dragon Legal v16 makes it easy for organizations to create custom commands to automate repetitive or manual processes, integrate them into existing workflows, and share them across the user community. Because these custom commands can be distributed to multiple users, employees are able to use them for immediate productivity gains.

**Improve mobile documentation and reporting.** Dragon synchronizes user customizations\* (i.e., an Auto-Text) with other Dragon clients across PC, iOS, and Android devices. This means mobile or field professionals can keep up with creating documents by using their custom words and Auto-Texts from any location. Use Dragon on popular touchscreen PCs, or sync with Dragon Anywhere Mobile, Microsoft's cloud-based, mobile dictation app, and complete work wherever business takes you.

**Increase dictation accuracy with custom vocabularies.** Even within a legal organization, different employees may use different vocabulary on the job.

### Benefits:

- **Developed by Nuance®** Microsoft® company, ensuring the best Windows 11 experience.
- **Increase efficiency**, billings, and firm health. With Dragon, Partners and corporate in-house legal leaders know staff is producing the lifeblood of the business, documentation, 3X faster than typing. This productivity boost supports a diversity of practice areas, including pro bono work.
- **Legal specific solution** with custom language model and automatic citation formatting.
- **Create and deploy** custom commands and vocabularies for individual use or share them within the firm or department.
- **Share customizations** with the Dragon Anywhere Mobile app and manage through the Nuance Management Center.

**Built for individual legal practitioners and enterprises.**

# Dragon Law Enforcement

## Handsfree incident reporting and back-office document management

**Safer, faster, more efficient incident reporting on Windows 11 and 10.**

Dragon Law Enforcement allows various officers and detectives to swiftly complete reports and other necessary documentation using voice commands, which significantly cuts down the time spent on administrative duties. Dragon integrates smoothly with dispatch and records management systems, providing real-time access to vital information. For instance, officers can easily check license plates by simply saying, "enter plate Alpha Bravo Charlie 123," or draft incident reports while remaining aware of their surroundings.

**Less time on paperwork, more time protecting and serving.**

Your officers are not clerks. Dragon speech recognition for law enforcement helps your agency stay focused on protecting and serving by reducing time spent on paperwork and administration.

**Build for agencies of all sizes.**

The financial advantages of Dragon Law Enforcement largely arise from the improved reporting and documentation processes through 99% accuracy in voice recognition technology. This enables officers to generate reports with greater speed and precision, which significantly cuts down on the reliance on costly manual transcription services. Moreover, the quicker completion of administrative duties reduces the necessity for overtime, leading to further cost savings. This improved efficiency empowers police departments to manage their budgets more wisely, allowing them to direct funds toward community engagement and other vital services.

ORDigiNAL plays a crucial role in facilitating the implementation of Dragon solutions, providing both technical and sales support. The combination of cost-effectiveness and user-friendliness makes it accessible for departments of any size. Additionally, the system's customizable features ensure that specific terminology and jargon are accurately captured, allowing reports to adhere to the stringent standards required across different jurisdictions. This adaptability not only enhances the quality of documentation but also supports the overall effectiveness of law enforcement agencies.

---

### Benefits:

- **Developed by Nuance®**—a Microsoft® company—ensuring the best Windows 11 experience.
- **Reduce reliance** on expensive outsourced transcription or administrative OT.
- **Streamline documentation** to focus on protecting and serving instead of administrative work.
- **Improved** report detail and accuracy.
- **Enhanced** officer productivity that scales across the agency—without compromising safety.
- **More time spent** by officers out in the community protecting and serving the public.
- **Easy deployment, customization and management.**

Use the Nuance Management Center for centralized administration, including usage tracking and license management, across multiple users to save time and reduce support costs.

---

# Get mobile documentation done... anywhere

Create documents of any length and edit, format and share them directly from your mobile device—whether at a remote office location, visiting clients, or ending your workday at a local coffee shop—with Microsoft® Dragon® Anywhere Mobile professional-grade mobile dictation.

For professionals who work outside the office, paperwork doesn't end when you're away from your desk. In fact, mobile employees are often burdened with heavier documentation demands – client intake forms, reports and more. This documentation can be time-consuming, especially when you don't have the right tools in hand. Dragon Anywhere Mobile makes it easy to create detailed and accurate documents, fill out form-based reports, or complete other paperwork – directly on your iOS® and Android™ smart-phone or tablet, all on-the-go. And when synchronized with Dragon for Windows® clients or thin-client workstations, work started in the field can be completed back at the office, seamlessly.

## Maximize on-the-go productivity.

### Improve mobile documentation.

The cloud-based voice recognition in Dragon Anywhere Mobile means you can dictate continuously, without time or length constraints. Once completed, easily share documents and reports via email or popular cloud-based sharing apps, such as Dropbox® and Evernote®.

### Create form-based templates to speed field reporting.

Using Dragon Anywhere Mobile's auto-texts feature, it's easy to create fillable forms, such as a client intake form, in just a few steps. Once created, navigate from field to field using simple spoken commands and fill in all the content by voice.

### Enjoy fast and easy editing – all by voice.

Dragon Anywhere Mobile has been enhanced to include the powerful voice- editing and customization features many have come to enjoy from Dragon on Windows clients. Now, it's even easier to not only create rich, detailed documents, but also edit, modify and format them – all by voice.

### Improve report detail and specificity.

Dragon Anywhere Mobile delivers optimal recognition dictation accuracy right out of the gate, with no training required. There's no need to decipher handwritten notes or try to recall details from hours before. Dictate in real time to ensure reporting accuracy while capturing client interactions and personal insights that lead to more detailed reports and documentation.

- Boost mobile productivity with customization and personalization.
- Cloud-hosted deployment meets mobile freedom.
- Work across devices, seamlessly.

## Benefits at-a-glance

- Eliminate paperwork backlogs and create documents on-the-go.
- Share your dictation with your other devices or colleagues via popular cloud-based sharing services.
- Create documents of all types, from long, detailed reports, to forms and quick client notes.
- Use simple voice commands to short-cut repetitive steps.
- Add powerful customizations to personalize to your needs.
- Sync with Dragon Professional Anywhere, Dragon Professional Group and Dragon Professional Individual for seamless productivity

## SYSTEM REQUIREMENTS

- Compatible with Android 7.0+ phones and tablets.
- Compatible with iOS 10.0+ 64-bit phones and tablets (iPhone® 5+, iPod® touch 6+, iPad® 5+, iPad Air, iPad Pro, or iPad mini 2+).
- Active Wi-Fi or cellular connection.

# Capture the complete patient story naturally and efficiently with **Dragon Medical One**

Next-level speech-driven clinical documentation with secure, convenient, and comprehensive support from pre-charting through post encounter.

Built on a modern architecture, Dragon Medical One, the industry's #1 rated conversational AI workflow assistant and documentation companion, empowers clinicians to create comprehensive clinical documentation and more naturally navigate workflows using just their voice.

Clinicians, not technology limitations, should dictate the patient story. With Nuance Dragon Medical One, your staff can stay productive whether they're at the workstation or anywhere else. Our clinical speech recognition and in-workflow documentation guidance provides a consistent experience at the hospital, clinic, office, and home, as well as on the road.

Using a secure desktop app, clinicians can use their voice to securely capture the patient story more naturally and efficiently, and on their own terms. Dragon Medical One provides a consistent and personalized clinical documentation experience that spans solutions, platforms, devices, and physical locations. This collaborative technology is powered by deep learning and conversational AI to augment speech recognition capabilities.

## Higher-quality documentation with greater clinician productivity.

- **Always available:** Dragon Medical One is designed for speed, accuracy, and flexibility, with personalized vocabularies and templates that can be accessed and shared across the widest range of devices in the industry.
- **Easy to install and maintain:** No complex configurations; clinicians can begin dictating in less than five minutes using your existing infrastructure. Automatic updates mean less work for your IT staff and less hassle for your clinicians.
- **Greater accuracy and automatic updates:** Using the latest deep-learning techniques and neural-network technologies, Dragon Medical One achieves 99% accuracy with no voice profile training required, and a single cloudbased profile that is auto-established at first use. Activities that were once manual, such as accent adjustments and microphone calibration, are now automatic, providing greater accuracy, a lower word error rate, and an optimal experience from the start.

---

### Key features:

- Off-the-charts accuracy: Achieve 99% accuracy, including automatic accent detection and audio calibration, with no voice profile training.
  - Advanced speech with natural language commands promotes a hands-free, efficient approach to documenting care before, during, or after the patient visit.
  - Streamline documentation by creating and sharing shortcuts, AutoTexts, voice commands, and custom vocabularies across individuals, departments, and organizations.
  - Auto-punctuation: Save time with speech recognition intuitive enough to finish your sentences—and punctuate them correctly.
  - Easily manage licenses, deployments, and default settings to ensure an efficient, familiar, and predictable experience across care settings, devices, and apps.
  - With remarkable responsiveness and resiliency, this HITRUST CSF-certified solution enables broad integration and seamless support for both browser and web-based EHRs—giving you the flexibility you need in the environment you want.
-

# PowerMic Mobile turns your smartphone into a secure wireless microphone

PowerMic™ Mobile gives clinicians the freedom to complete clinical documentation using a smartphone as a wireless microphone.

Designed to work with any Windows-based desktop solution, PowerMic Mobile has been fully tested and optimised for use with Dragon Medical One and other Nuance healthcare solutions.

## More freedom, same PowerMic experience.

PowerMic Mobile turns your smartphone into a secure wireless microphone for use with Windows-based clinical speech recognition solutions. Optimised for Dragon Medical One, PowerMic Mobile gives clinicians the freedom to move between workstations, rooms and locations to complete clinical documentation using a smartphone as a desktop wireless microphone.

PowerMic Mobile enhances clinician productivity and convenience with support for virtualized EPR deployments, user-programmable buttons and 256-bit encryption with end-to-end security over WiFi or cellular networks. Clinicians can now choose to use PowerMic Mobile as a complementary input device or as an alternative to PowerMic or any other supported handheld microphone or headset.

---

### The Benefits:

- Clinicians can complete patient notes from any available workstation, with or without a wired microphone, as soon as they see each patient.
  - PowerMic Mobile is highly scalable so it can grow with your organisation and offers central web-based management to set up and manage user accounts and preferences.
  - Whether desktop or thin client, at work or away from the office, PowerMic Mobile offers greater mobility for clinicians in the hospital, clinics and at home, with vendor and endpoint agnostic support for virtualised RPEs.
  - PowerMic Mobile offers several intuitive mechanisms for pairing mobile devices with target applications, including Windows login, Nuance application username or token-based pairing.
  - PowerMic Mobile makes dictation faster and easier with programmable on-screen controls for audio capture, navigation through clinical documents, and review and editing.
  - Compatible with iOS and Android.
-

# Enhancing Clinician Well-Being and Patient Care with **Dragon Ambient eXperience (DAX)**

Nuance DAX, an ambient clinical intelligence (ACI) solution, automatically documents patient encounters at the point of care accurately and efficiently. For use in office and telehealth settings, in all ambulatory specialties including primary and urgent care, DAX can help:

- Increase operational efficiency by reducing time spent documenting care
- Boost physician satisfaction by decreasing administrative burdens and burnout
- Improve the patient experience by enabling physicians to focus on their patients

## Your clinical documentation copilot.

Serving as an AI copilot for automated clinical documentation, the Dragon Ambient eXperience (DAX) Copilot solution enables physicians to do more with less and improve clinical efficiency, physician and patient satisfaction and financial outcomes. Amplified by the power and scale of the Microsoft Cloud for Healthcare, it combines Nuance's proven conversational and ambient AI with the newest and most capable generative AI model.

Organizations can streamline repetitive and manual documentation processes, while saving time for IT staff and boosting productivity and efficiency for busy professionals across work teams.

## Automatically document care with DAX.

DAX automatically documents patient encounters accurately and efficiently at the point of care. Exceeding the capabilities of a virtual or on-site scribe, DAX scales across your organization affordably to deliver better healthcare experiences for clinicians and patients.

---

### Benefits:

- **Captures a multi-party conversation ambiently.** Clinicians engage in natural conversation with patients and other family members while the mobile app securely captures the conversation at the point of care, allowing clinicians to connect with patients rather than screens.
  - **Works seamlessly with electronic health records.** Used in conjunction with Dragon Medical One which integrates with over 200 EHRs, streamlining implementation.
  - **Creates clinical documentation automatically.** Converts encounter conversations into comprehensive specialty-specific clinical documentation summaries, and delivers the summary into the application and the Dragon Medical One desktop for clinician review and editing.
  - **Customizable templates**  
Clinicians can customize and personalize note templates with Dragon Medical One and functionality in the EHR
  - **Produces high-quality documentation**  
Uses the latest AI technologies and is trained on over 10M encounters to produce accurate documentation efficiently and consistently.
-



# Microsoft Dragon Copilot: Redefining Clinical Efficiency Through Intelligent AI Integration

In an era marked by clinician burnout, staffing shortages, and administrative overload, healthcare systems face unprecedented challenges. Clinicians spend up to two hours on documentation for every hour of patient care, diverting focus from critical interactions. Microsoft Dragon Copilot emerges as a transformative AI solution, merging the precision of Dragon Medical One's voice dictation with DAX Copilot's ambient listening and generative AI. Built on Microsoft Cloud for Healthcare's secure architecture, it streamlines workflows, enhances care quality, and prioritizes clinician wellbeing—all within a trusted, compliant ecosystem.

## 1. Streamline Documentation

- Converts multilingual, multiparty conversations into specialty-specific clinical notes.
- Customizable templates, AI prompts, and voice correction tools for seamless EHR integration.
- Adaptive vocabularies and natural speech processing across devices.

## 2. Surface Contextual Insights

- Instant access to patient-specific data (e.g., medications, family history) without disrupting workflows.
- Trustworthy, cited medical knowledge for informed decision-making.

## 3. Automate Tasks Effortlessly

- Single-click generation of referral letters, after-visit summaries, and encounter summaries.
- Captures orders, diagnoses, and evidence directly from patient conversations.

## Enterprise-Grade Support & Trust.

Backed by decades of medical speech recognition expertise, Dragon Copilot offers 24/7 in-app support and real-time guidance. Aligned with Microsoft's Responsible AI principles, it adheres to stringent security, privacy, and compliance standards, including healthcare-specific safeguards for reliable, ethical outputs.

Microsoft Copilot for Security is now listed and covered by a Business Associate Agreement (BAA), which is crucial for healthcare providers subject to **Health Insurance Portability and Accountability Act (HIPAA) regulations**. This ensures that all Protected Health Information (PHI) managed by Copilot for Security receives the highest levels of security and confidentiality.

### Benefits:

#### Elevate Clinician Wellbeing:

Reduce burnout and cognitive load with intuitive workflows that prioritize patient interaction over administrative tasks.

#### Boost Operational Efficiency:

Accelerate throughput with AI-driven documentation, task automation, and reduced manual effort.

#### Enhance Patient Outcomes:

Improve care consistency and accuracy by capturing comprehensive patient narratives and expanding access.

#### Drive Financial Performance:

Mitigate revenue leakage through timely reimbursements, fewer denials, and higher clinician retention.

"With **Dragon Copilot**, we're not just enhancing how we work in the EHR—we're tapping into a unified, Microsoft-powered ecosystem where AI assistance extends across our organization, delivering a consistent and intelligent experience everywhere we work. It's this ability to enhance the patient experience while streamlining clinician workflows that makes Dragon Copilot such a game-changer."

— Dr. R. Hal Baker, SVP and CIO, WellSpan Health



# Connect by Omilon, boost your existing EHR systems

Omilon's philosophy focuses on three different stages of the documentation process.

Omilon takes documentation and efficiency solutions to the next level, beyond speech recognition and transcription. Omilon does this by helping users optimise and facilitate their daily work, using the right technology for each challenge.

Omilon is the dominant player in the field of documentation, dictation and speech recognition in the Nordic countries. By combining a unique market position in Scandinavia with extensive expertise, long experience and powerful software solutions, Omilon is able to bring value to all healthcare regions.

Omilon offers a range of different modules or applications, all designed to optimise the healthcare experience for doctors, patients and administrative staff. The solution is divided into 'capture, enhance and deliver', all linked together and distributed through Omilon Connect.

The system can be configured to use all modules together or separately, depending on customer preference. Omilon Connect allows native Omilon applications to automatically integrate with the EHR, and also allows other third-party applications to do the same.

Omilon Connect supports all the major technologies on which modern applications are built, including Win32, .NET, Java and many others.

---

## Why to choose Omilon Connect, the speech recognition solution?

Enriches the user interface of clinical systems with advanced speech recognition, command navigation and automation.

- Cursor speech
- Commands
- Navigation
- Automatic forms

Tightly connect speech recognition to the EHR to enhance :

- voice editing
  - voice navigation
  - voice forms
-

# GoSpeech: Advanced Speech-to-Text Solutions for Enterprise Needs

GoSpeech is a leading platform for speech-to-text technology, designed specifically to meet the demands of enterprise users. By converting spoken language into accurate, structured text, GoSpeech enables organizations to optimize workflows, capture meeting insights, and enhance compliance. Its advanced AI and machine learning algorithms ensure precision in transcription, making it a valuable tool for industries ranging from healthcare and finance to legal and customer service.

## Why Choose GoSpeech for Your Enterprise Needs?

### 1. High Accuracy with Advanced AI Technology

GoSpeech uses cutting-edge artificial intelligence and machine learning algorithms to deliver highly accurate transcriptions, even for specialized industry jargon and complex terminology. With multilingual support and recognition of diverse accents, GoSpeech provides reliable accuracy for companies with international teams or diverse clientele.

### 2. Real-Time and On-Demand Transcription

GoSpeech offers both real-time and batch transcription options, giving organizations the flexibility to transcribe meetings, events, and calls as they happen or process recordings afterward.

### 3. Enhanced Data Security and Compliance

For industries where data security is critical, such as finance, healthcare, and legal services, GoSpeech is built with robust security protocols that protect sensitive information. It adheres to regulatory compliance standards (like GDPR), ensuring that transcribed data is managed with the highest level of confidentiality.

### 4. Seamless Integration with Existing Systems

GoSpeech integrates smoothly with popular enterprise applications and document management systems, including CRM software and analytics tools.

### 5. Customizable for Industry-Specific Needs

GoSpeech provides customizable features that allow businesses to adapt the platform to their specific terminology and document needs.

### 6. Boosts Productivity and Reduces Costs

Automating transcription with GoSpeech can significantly boost productivity, saving employees hours of time spent on manual transcription and note-taking. By reducing the workload, GoSpeech also helps lower operational costs associated with traditional transcription services or dedicated transcription staff. Businesses gain a high-value solution that reduces expenses while increasing efficiency.

## The Advantages:

- **Several hours recordings**  
The enterprise solutions allow transcribing very long files.
- **Data security**  
GoSpeech runs DSGVO-compliant in a triple-replicated IT infrastructure exclusively in Germany.
- **Employee training**  
In our training courses we'll bring your employees full scope of services for efficient transcription.
- **Team function**  
Get results faster. The team function allows you to edit documents with other people in a simple and uncomplicated way.
- **Billing on volume basis**  
Pay only for your purchased contingent. No additional costs for users.
- **Variety of languages**  
GoSpeech offers support for a wide range of major languages, including English, French, German, Italian, Spanish, Ukrainian, and more.
- **No user limitation**  
Insert unlimited users at no additional cost.
- **Premium Support**  
Benefit from our premium Support - with personal Contact person.

# Breaking Barriers in Healthcare— How **CSPEAK** is Making Every Word Count

CSPEAK, developed by ClinicallySpeaking, is an innovative digital solution tailored to enhance communication in clinical environments. It leverages technology to streamline interactions among healthcare teams, patients, and stakeholders, ensuring clarity, accuracy, and compliance. Whether through secure messaging, patient education tools, or training modules, CSPEAK addresses the unique challenges of modern healthcare delivery.

## The Benefits of CSPEAK: A Game-Changer for Healthcare.

### 1. For Clinicians.

- **Reduce Errors:** Miscommunication contributes to nearly 30% of medical errors. CSPEAK's structured messaging minimizes ambiguity.
- **Save Time:** Instant access to patient data and team members cuts down on delays.
- **Enhanced Skills:** Training modules improve empathy, cultural competence, and crisis communication.

### 2. For Patients

- **Clearer Understanding:** Simplified medical jargon via patient portals fosters informed decision-making.
- **Stronger Trust:** Transparent communication builds rapport and satisfaction.
- **Better Outcomes:** Engaged patients are more likely to adhere to treatment plans.

### 3. For Healthcare Organizations

- **Compliance Made Easy:** Automated documentation ensures adherence to regulations like HIPAA.
- **Cost Efficiency:** Streamlined workflows reduce administrative overhead and readmission rates.
- **Reputation Boost:** Higher patient satisfaction scores and staff retention enhance institutional credibility.

## Real-World Impact.

A 2022 pilot study at a mid-sized hospital using CSPEAK reported:

- ✓ 25% reduction in miscommunication-related incidents.
- ✓ 40% faster response times between departments.
- ✓ Patient satisfaction scores rose by 18% within six months.

CSPEAK isn't just a tool—it's a paradigm shift in clinical communication. By fostering collaboration, reducing risks, and prioritizing patient-centric care, it sets a new standard for healthcare excellence. As the industry evolves, platforms like CSPEAK will be indispensable in achieving safer, more efficient, and compassionate care.

---

### Azure services:

**Secure Real-Time Messaging:** Encrypted channels for HIPAA-compliant discussions between providers.

**Patient Engagement Portals:** Customizable resources to educate patients and improve adherence.

**Training & Certification Modules:** On-demand courses for clinicians to refine communication skills.

**Interdisciplinary Collaboration Tools:** Shared dashboards for care teams to coordinate seamlessly.

**Analytics & Reporting:** Track communication metrics to identify trends and optimize workflows.

---

# Powering Innovation and Intelligence With Azure AI

Azure AI - One of the most advanced and comprehensive artificial intelligence services on the market.

## Business Transformation with Azure AI.

Powered by Microsoft's trusted cloud infrastructure, Azure AI brings the power of machine learning, data analytics, and cognitive services to help businesses of all sizes unlock new possibilities and drive transformation. Whether you're looking to automate tasks, gain insights from data, or create innovative AI-driven applications, Azure AI offers the tools and scalability you need to stay ahead in today's fast-paced digital landscape.

## The Power of Azure AI for Developers and Data Scientists.

Azure AI is a suite of AI services and tools designed to help developers, data scientists, and organizations integrate cutting-edge artificial intelligence into their workflows and solutions. Built on Microsoft's global cloud platform, Azure AI enables businesses to harness advanced algorithms and computing power to build and deploy AI models efficiently.

## Comprehensive AI Capabilities to Drive Innovation.

From computer vision to natural language processing (NLP), from speech recognition to decision-making algorithms, Azure AI covers a broad spectrum of AI capabilities. Whether your goal is to automate complex processes or deliver personalised customer experiences, Azure AI provides the foundation for innovative solutions.

## Can My Organisation Use AI?

With Azure AI, the possibilities are endless, and businesses across various industries are already harnessing its capabilities to address real-world challenges. In retail, AI-driven product recommendations and automated support systems are helping personalise customer experiences. The finance sector is improving risk management and fraud detection with machine learning models. In healthcare, AI is enhancing patient outcomes by analyzing medical records, predicting disease outbreaks, and offering personalised treatment plans. Meanwhile, in manufacturing, AI-powered analytics and decision-making tools are optimising supply chain management and predictive maintenance.

At ORdigiNAL, we believe in the power of AI to drive innovation and growth. Whether you're just starting your AI journey or looking to scale existing projects, Azure AI can help you achieve your goals.

---

### Key features:

As a certified Microsoft distributor, we understand the need for flexible, reliable, and scalable AI solutions. Azure AI offers unmatched benefits for businesses looking to use into the power of artificial intelligence.

#### - AI Services.

From pre-built models to tools for custom development, with Azure AI you can create intelligent applications tailored to your business requirements.

#### - Secure and Compliant.

Azure adheres to strict industry standards, such as GDPR, ISO/IEC certifications, and HIPAA. Your data and AI models are private.

#### - Scalable and global.

Scale your AI solutions as they grow, with the ability to handle large datasets and complex models. With a global network you can deploy AI solutions anywhere.

#### - Integration within Microsoft.

When using other Microsoft services such as Azure Cloud or Office 365, integrating AI into your existing infrastructure is seamless.

---



# Create your own conversational AI apps with: Microsoft Azure Cloud

Harness the power of best-in-class speech recognition, speech synthesis, and NLU for enhanced customer experiences.

Want to build your own enterprise-grade, AI-powered apps, while developing your in-house skills? Introducing Microsoft Azure cloud—your single DIY platform for building, testing, deploying, and optimizing applications that harness best-in-class, proven, conversational AI. Azure cloud gives you the control, flexibility, and freedom to build the way you want, with world-leading speech and NLU capabilities, speech synthesis and NLU capabilities, and the support of our UI/UX design, integration and optimization experts.

Azure Cloud also lets you build on your existing application investments and deliver phased migrations from traditional IVR to conversational IVR—and beyond. In this way you can improve customer experience, while keeping costs in check.

One platform for the entire development lifecycle (and all your channels) Azure Cloud gives you direct API access to conversational AI capabilities, and proven app-building tools across the entire application development lifecycle.

## Microsoft Azure Cloud is a best-in-class development platform



- Speech-to-text & Text-to-speech
- Dialog
- Dashboard
- Test
- Tutorials & forums

## Only Microsoft offers.

Open-ended, conversational dialogs. Allow your customers to speak freely and in their own words—whether they're talking to an FAQ-type VA or a highly personalized, transactional bot or IVR.

## Full lifecycle support.

Azure Cloud isn't just for developers and speech scientists. It supports the whole software development lifecycle allowing business stakeholders, testers, and Q&A to work within the same tool—accelerating time to market.

## Microsoft Azure Cloud is a complete platform designed



- Business stakeholders
- Developers
- Dashboard
- Voice & chatbot designers
- Data & speech scientists
- Testing & QA

**Leading brands have built a better customer experience with Microsoft Azure Cloud. What will you build?**

- **Financial institutions** have built branded voice experiences for virtual assistants
- **Leading airlines** have modernized IVRs from directed dialogue to NLU
- **Transportation providers** have transformed their announcement notifications with the help of text-to-speech technology
- **Gaming companies** have improved accessibility with speech technology
- **Film distributors** have used speech capabilities to reduce the cost of dubbing
- **Pharmacies** have installed voice-enabled kiosks in their branches to improve their customer experience

Deploy as you want to. Create advanced conversational AI experiences and choose where you'd like to deploy your app:

- On premises
- 3rd-party cloud or Microsoft hosted

# Contact Center 4ALL: Enhancing Customer Contact Management with Microsoft Integration

Today, many companies are successfully using Microsoft solutions such as Teams and Dynamics. However, managing customer contacts in a professional way is difficult. CC4ALL offers rich ACD features such as skills-based routing, dynamic queuing, real-time reporting, graphical call flow editor and much more. Operator and manager/secretary features are also available.

Seamless integration with Teams and Dynamics adds the ability to efficiently route all calls to, for example, the best available employee with the most knowledge of a specific product or service. CC4ALL uses this powerful routing engine for all available channels, such as email, web chat or social media conversations. With CC4ALL solutions, not only do you save on your IT costs, but communication with your customers becomes optimal.

**Omni-Channel.** CC4ALL offers omni-channel contact centre functionality, all managed from a single central administration tool and a single client. The addition of extensive web chat and social media capabilities makes CC4ALL the most complete, versatile and flexible omni-channel solution on the Skype for Business contact centre market.

**Call routing.** One of the biggest frustrations for customers is being put on hold and then misconnected. CC4ALL takes call routing seriously. Routing can be based on skills or on the longest available agent.

**Reporting.** Professional real-time dashboards and historical reports are included for voice, web chat, email and social media. The recent implementation of Microsoft Power Bi adds comprehensive, easy-to-read dashboard functionality.

---

## The Advantages:

- **The right solution first time.**  
Being transferred to the wrong agent is the number one reason customers abandon a call. We take call routing seriously, all channels, voice, email, web chat and social media, are routed with the same powerful engine so all conversations are transferred to the right agent, first time.
  - **Customer contact transformation.**  
Although most inbound conversations still take place over the phone, online chat and social media are booming. An excellent omni-channel solution is therefore crucial to the transformation of customer contact.
  - **The contact centre of the future is already here.**  
Grâce à l'intelligence artificielle intégrée, le texte et la parole peuvent être analysés. Cela offre un aperçu unique de tous les contacts avec les clients et de l'efficacité des agents. Thanks to built-in artificial intelligence, text and speech can be analysed. This provides a unique insight into all customer contacts and agent effectiveness.
-

# Scalable, secure, and costefficient: Operator Connect

Seamlessly Integrate Telephony Services into Microsoft Teams with Operator Connect: Unlock Unified Communication and Collaboration.

## Streamline Communication Workflows within M. Teams:

Operator Connect is a comprehensive communication solution that seamlessly integrates telephony services into Microsoft Teams, empowering businesses with unified communication and collaboration capabilities. With its robust features and benefits, Operator Connect enhances productivity, simplifies workflows, and delivers exceptional communication experiences.

## Seamless Integration with Microsoft Teams:

Operator Connect adds telephony to Microsoft Teams, allowing users to make calls, listen to voicemail, and manage call settings within the app, improving collaboration and communication workflows.

## Advanced Call Management, Scalable and Flexible Solutions:

Operator Connect offers advanced call management capabilities to businesses, enabling efficient call handling. Features like call routing, call queuing, and call recording enhance customer interactions and improve the overall efficiency of call handling, empowering businesses to deliver exceptional customer service.

Operator Connect offers scalable and flexible telephony solutions, enabling businesses to easily adapt their services as their needs evolve. The capability to add or remove users and features provides flexibility and agility, while customization options ensure that communication solutions are precisely tailored to meet specific business requirements.

---

### Key benefits:

- Directly integrate telephony services into Microsoft Teams for unified communication and collaboration.
  - Make and receive calls, access voicemail, and manage call settings within the familiar Teams interface.
  - Enjoy a consistent user experience and streamline communication workflows.
  - Gain access to advanced call management capabilities for efficient call handling.
  - Benefit from features such as call routing, call queuing, and call recording.
  - Enhance customer interactions and improve overall call handling efficiency.
  - Scale telephony services easily to accommodate business growth and changing needs.
  - Add or remove users and features with flexibility and agility.
-

# Microsoft Teams SMB Direct Routing Service **Powered by Orange**

Available in 160 territories and countries, Orange Business Services replaces multiple local providers.

The Teams direct routing module from ORdigiNAL offers Orange Business Services customers (small and midsize businesses) the ability to use Microsoft Teams as fully-fledged PBX in the cloud.

It is a global voice service that can manage outbound, inbound, on-net, off-net and local at national and international levels. This enterprise-grade module allows these customers to register and provision their Orange SIP trunk and telephone numbers to the virtual SBC's of the ORdigiNAL cloud service who are paired to deliver 'direct routing' capabilities for Microsoft Teams.

## **Direct Routing Connectivity:**

Direct Routing Connectivity feature allows businesses to integrate their telephony infrastructure with Microsoft Teams, enabling seamless communication and collaboration within a single platform.

## **Global Reach:**

The Global Reach feature ensures businesses have access to reliable and secure communication services worldwide, facilitating collaboration and connectivity across different regions.

## **Enhanced Call Quality:**

The Enhanced Call Quality feature ensures businesses can enjoy high-quality voice calls, providing clear and reliable communication within Microsoft Teams.

## **Simplified Deployment and Management:**

The Simplified Deployment and Management feature makes it easy for businesses to set up and manage their telephony integration with Microsoft Teams, offering a user-friendly interface and intuitive management tools.

---

### **Key benefits:**

- Seamlessly connect existing telephony infrastructure to Microsoft Teams.
- Enable users to make and receive calls directly from the Teams interface.
- Streamline communication by integrating voice calls with other collaboration tools in Teams.
- Leverage Orange's extensive global network for worldwide connectivity.
- Collaborate with partners and clients across different locations.
- Ensure reliable and secure communication services internationally.
- Deliver high-quality voice calls with clear and reliable communication.
- Minimise disruptions and provide excellent call quality.

**Elevate your communication experience with Microsoft Teams SMB direct routing service by Orange.**

---



# With **CallCabinet**, you get recording of compliance calls...

CallCabinet is the first and most comprehensive compliance call recording, call quality assurance and conversation analysis solution available on the market.

CallCabinet is the first and most comprehensive compliance call recording, call quality assurance and conversation analysis solution available on the market.

CallCabinet securely captures, stores and analyses all conversations, regardless of the platforms on which they take place. From Microsoft Teams, Cisco, Webex, to Avaya, Zoom, RingCentral, and everything in between, enjoy seamless integration with all Unified Communications (UC), IP-PBX and telephony platforms with a single solution.

CallCabinet is fast to deploy and comes standard with military-grade security, data sovereignty, multi-tenancy, data resilience and redundancy, global support, and much more.

## One solution does it all.

CallCabinet's suite of solutions supports all your company's communications networks, regardless of the number of communications platforms, users, departments or extensions involved. As a pioneer in cloud-based compliant call recording, CallCabinet provides unlimited throughput between your call, conference and contact centre platforms and the CallCabinet solution.

## Scalable and adaptable.

CallCabinet's price evolves according to usage, allowing you to choose the features you need with one of our licence types. Unleash the power of CallCabinet's versatility. Consolidate your needs with a single, unified solution that gives you everything you need, from compliant call recording to in-depth conversation analysis.

---

### The benefits:

- CallCabinet enables businesses to eliminate communication and business intelligence silos with one powerful solution.
- Record calls effortlessly, regardless of the platform used (unified communications systems, traditional phone lines, etc.)
- Gain valuable insights into multilingual interactions with CallCabinet's advanced conversational intelligence features.
- Capture conversation data from all communication devices used by your team to get a complete picture of your compliance and policy adherence environment.
- Access and analyse call, conference and contact centre recordings from anywhere, with secure data storage that complies with data sovereignty regulations of data. Define granular policy settings at company, department, team or individual level.

CallCabinet can seamlessly migrate all legacy or proprietary call data, unlocking and centralising access and information.

---



# Streamlined Workflow Management with DigtaSoft Pro

DigtaSoft Pro is Software designed by Grundig to facilitate effective collaboration between authors and administrative staff.

Grundig's DigtaSoft Pro is an adaptable speech processing software that fits seamlessly into any industry, improving workflow for authors and administrative personnel alike. It includes a host of features, such as the option to set up and manage several inboxes, specifically designed to address the needs of fields like healthcare and law. Users can prioritize their tasks, keep track of dictation statuses, and set deadlines with ease. Perfect for large organizations, DigtaSoft Pro provides organized dictation management, even when faced with high dictation volumes.

Opting for DigtaSoft through ORDiginal means you'll receive exceptional support. We supply all the resources you need to get your end user operational. If you encounter any problems, our dedicated team is here to lend a hand.

## Key Benefits of DigtaSoft Pro.

DigtaSoft Pro is perfect for managing extensive networks and features a multi-step document approval process that can handle up to ten release stages with real-time tracking. The inclusion of the Digta Messaging feature allows for instant communication between dictation devices and the software, enhancing workflow integration and accelerating document creation.

The interface is designed to be user-friendly, drawing inspiration from familiar office ribbon layouts, making it accessible for newcomers. It also offers robust security through DSSPro format dictations, 128/256-bit encryption, and password protection, making it ideal for sensitive industries like healthcare and law. Additionally, its compatibility with speech recognition tools, such as Dragon Professional or Medical, simplifies the proofreading process.

## Products:

DigtaSoft Pro is compatible with all current Grundig Digta devices. Of course it is always possible to order just the licences as well.

- **Digta SonicMic 3.**  
The push button microphone is available in a packaged solution with DigtaSoft Pro. It excels through its outstanding ergonomics and the trackpad, which has already proven itself in smartphones.
- **Digta 7 Premium Set.**  
This first class mobile dictation device can be adjusted according to the user's individual way of working. Thanks to the position sensor it's also best suited for left-handed operation.
- **Digta Soundbox 830.**  
System solution (together with foot control and an earphone) for a transcription workstation consisting of the Digta Soundbox 830 and PC software DigtaSoft Pro, including a single user license.
- **Digta Transcription Starter Kit USB.** Reasonably priced beginner's package for the transcription station. It contains the DigtaSoft Pro software, a foot switch, and headphones with USB connection. Can be used in every industry by any professional.



# NetScribe – your faster transcription workflow

## Accurate Transcriptions for meetings with multiple people.

Get more value from your audio and video recordings from meetings with an on-demand web application that allows you to upload most media file formats, with supporting documentation, to VIQ Solutions for accurate, AI powered speech recognition platform. The volume of digitally recorded content during legal proceedings, law enforcement incidents, insurance claims, corporate meetings and other public events continues to accelerate, but with the implementation of technology and updated document workflows, you can scale effortlessly.

## Simplify transcript request and review.

NetScribe allows you to record in-app or upload multiple recordings, including dictated notes, interviews, testimonials, recorded calls, body cameras and any other multi-stakeholder meeting, for transcription as quickly as possible. Select your turnaround time and language, track the status of requests and review recordings synchronised with transcription. NetScribe provides an efficient, easy-to-use workflow for single and multi-speaker environments.

Request automatic FirstDraft™ for a highly accurate draft document returned in minutes when verbatim transcription (word-for-word transcription) is not required, or guarantee 99% accuracy by requesting VIQ Professional Transcription.

---

### Advantages:

- **Secure.** Transcriptions are secured with industrial-grade encryption and additional safeguards.
  - **Efficient.** Agnostic solution. Upload multiple files in audio/video format and combine them into a single document.
  - **Flexible.** Can be submitted for professional editing by VIQ, self-edited within the application or uploaded for external editing and sharing.
  - **User-friendly.** The interface and easy-to-use features are constantly being improved based on real feedback from the feedback.
  - **Comprehensive.** Record, download and playback audio/video files, and review, edit and check the status of transcripts.
-

# SpeechWare – Enhance your Speech Recognition Technology

Quick and accurate writing, editing and formatting of emails, contracts, briefs, documents, and more – all by voice!

SpeechWare is as a top innovator in microphone technology, specifically crafted to improve speech recognition software such as Dragon Professional. The premier TableMikes are engineered to deliver crystal-clear audio, even amidst background noise, thanks to high tech noise-cancellation technologies. With a user-friendly, plug-and-play setup, these microphones are perfect for every type of user.

SpeechWare TableMikes are favored by individuals across various sectors—legal, medical, and corporate—where precise speech transcription and voice commands are essential for productivity. By partnering with ORDigiNAL, you can provide your clients with technologies from SpeechWare, accompanied by additional advantages.

## Why Speechware is the Ideal Choice.

Speechware TableMikes and other microphones have award-winning noise-cancellation that ensures that users experience superior audio clarity, making dictation more accurate and reducing the number of errors in transcriptions. This is particularly useful for those working in busy or open-office environments where background noise could interfere with traditional microphones.

Speechware microphones enhance productivity through hands-free operation, allowing users to execute commands, dictate documents, and control applications without relying on a keyboard or mouse. Their sleek, compact design fits effortlessly into any workspace, whether at home or in a professional setting, adding both functionality and style.

Additionally, the ease of setup—thanks to their plug-and-play feature—ensures that users can get started quickly, with no technical expertise required. And if you do, ORDigiNAL is here to help.

---

### Key products:

Our product is designed for committed users who demand exceptional audio quality and comfort in speech recognition and voice applications. We prioritize optimal performance, accuracy, and background noise reduction to ensure crystal-clear audio and real-time transcription with minimal latency.

#### – USB 3-in-1 TableMike

This medium-range model enables hands-free dictation at a longer distance with maximum comfort and accuracy. It adds long-range dictation, up to 50 cm compared to the entry-line USB 1-in-1 TableMike.

#### – USB TravelMike with Base & Hub

World's smallest desktop microphone designed for laptops and notebooks, delivering performance identical to that of larger TableMikes. With the proprietary VoiceMatic chipset inside the USB MultiAdapter.

#### – FlexyMike Single Ear Cardioid

An ultra-lightweight, titanium alloy ear hook with a comfortable three-point clip-on fit for either ear and a flexible boom for consistent microphone positioning. It offers excellent Dragon accuracy when paired with an optional USB Adapter.

#### – TwistMike

The longest and most flexible speech microphone on the market offers superior Dragon recognition accuracy with its large cardioid capsule when paired with the optional USB Adapter or any quality USB microphone adapter for close-range dictation.

---



# ODMS Cloud: The Ultimate Cloud-Based Dictation and Transcription Solution

The ODMS Cloud (OM System Dictation Management System) is a cloud-based solution designed to streamline dictation and transcription workflows for professionals. It enables authors to record and upload dictation files from anywhere, allowing transcriptionists to access and transcribe these files remotely, thereby enhancing efficiency and collaboration.

## Key Features:

- **Instant Cloud Sharing:** Authors can upload dictation files to the cloud, making them immediately accessible to transcriptionists, regardless of their location.
- **Cross-Platform Accessibility:** Compatible with Windows PCs, Mac computers, and smartphones, ODMS Cloud ensures that users can access and manage dictation files from any device with an internet connection.
- **Secure Data Handling:** The system employs end-to-end encryption, HTTPS protocol, and offers 256-bit AES pre-encryption for files, ensuring that sensitive information remains protected during transmission and storage.
- **User-Friendly Interface:** ODMS Cloud features a sleek and simple graphical user interface, designed to provide only the necessary features, reducing complexity and enhancing user experience.
- **Reliable Infrastructure:** Hosted on the Microsoft Azure platform, ODMS Cloud offers robust performance, data integrity, and regional data storage to comply with local regulations.
- **Subscription Model:** Available through a 12-month subscription, each user receives 5GB of shared storage, with automatic updates ensuring access to the latest features without manual intervention.

---

## Benefits:

- **Enhanced Flexibility:** Professionals can dictate and transcribe from any location, facilitating remote work and improving turnaround times.
  - **Simplified Workflow Management:** Administrators can easily manage users, licenses, and workflows through a centralized web interface, streamlining operations.
  - **Scalability:** ODMS Cloud caters to businesses of all sizes, from solo practitioners to multinational organizations, adapting to varying dictation and transcription needs.
  - **Cost Efficiency:** By eliminating the need for dedicated servers and reducing reliance on physical storage, organizations can lower operational costs.
-

# The most powerful 3D data and build preparation software – **Materialise**

## Optimize Your 3D Printing Workflow.

Materialise Magics is an industry-leading data preparation and STL editor software for additive manufacturing that allows STL file conversion, errors repairing, design editing, and build platform preparation. Magics is designed to optimize 3D printing workflows. Using both CAD and mesh tools. You can gain advanced control over your processes, automate repetitive tasks, and increase print success rates, no matter which 3D printing technology you use.

ORDigiNAL, as a value-added distributor, enhances the experience by providing specialized support and training that help you and your end users maximize the benefits of Materialise Magics, ensuring seamless integration into all types of organisations.

## Why Choose Materialise Magics for 3D Printing?

Magics continues to evolve and enhance its capabilities. Discover the latest features of Materialise Magics, such as a Dark Theme designed to minimize eye strain during long working hours and a Lattice Module that offers improved beam lattices for better design optimization. The new CAD tools make it easier to hollow out parts and manage perforations, while Organic Sinter Boxes and advanced 3D nesting techniques boost space efficiency and protection. Additionally, contactless support helps prevent overheating during production, and you can now keep labels intact while making edits. With performance upgrades, you can enjoy a smoother workflow when dealing with large datasets and rendering tasks.

Industries such as aerospace, automotive, healthcare, and manufacturing can greatly benefit from Materialise Magics, thanks to its ability to streamline and automate 3D printing processes. It enables users to reduce costs, minimize material waste, and improve overall print quality.

---

### The benefits:

- **Import data types and formats.** Import nearly all relevant file formats, retain native color information, and stay in control of your original data. Making the transfer to Magics easy and fast.
  - **Analyze builds.** Avoid costly build failures and reduce scrap rates using analysis and simulation features that detect potential issues.
  - **Transfer designs to your machine.** Slice builds with precision and communicate clear building instructions to your printer with our Build Processors.
  - **Generate reports.** Extract nearly any parameter from Magics to keep track of builds and ensure repeatability with fully customizable automatic reports.
-

# ControlSuite: Comprehensive Automation for Document Workflow Management

ControlSuite by Tungsten Automation is a cutting-edge solution designed to streamline and optimize document workflow processes within organizations. With its focus on document capture, print management, and mobile accessibility, ControlSuite empowers businesses to enhance productivity, maintain compliance, and maximize the value of their existing infrastructure.

## Key Features of ControlSuite:

### Document Capture and Processing

ControlSuite allows for quick and accurate document capture from multiple sources, including scanners, mobile devices, and emails. The software automates document classification and data extraction, which helps reduce errors and saves time. By converting scanned documents into searchable formats, ControlSuite makes it easy to retrieve and organize documents.

### Print Management and Security

ControlSuite offers comprehensive print management features, enabling organizations to control and monitor print jobs. The platform includes user authentication, restricting access to sensitive documents and enhancing security. Secure pull printing allows users to retrieve their documents from any networked device, reducing waste and ensuring privacy.

### Mobile and Remote Access

With support for mobile workflows, ControlSuite enables employees to manage documents from any location. It integrates with mobile devices, allowing users to capture, print, and share documents on the go. This feature is especially valuable for remote teams and hybrid work environments, ensuring productivity and access to resources from anywhere.

### Compliance and Governance

ControlSuite supports regulatory compliance by offering secure document handling and traceable audit trails. The software meets the compliance standards required by various industries, helping businesses avoid costly penalties and maintain data integrity.

### Integration and Scalability

ControlSuite integrates seamlessly with existing IT infrastructure, including popular business applications and document management systems. It is scalable, allowing organizations of all sizes to use the platform effectively as their needs evolve.

---

## The benefits:

### – Enhanced Productivity

By automating routine document processes, ControlSuite frees up valuable time for employees, enabling them to focus on more critical tasks. The platform's user-friendly interface and mobile capabilities further boost productivity by allowing users to manage documents with ease.

### – Improved Document Security

With secure print and authentication features, ControlSuite ensures that sensitive documents are only accessible to authorized personnel. This reduces the risk of data breaches and protects confidential information, making it an ideal solution for organizations that handle sensitive data.

### – Cost Savings

ControlSuite's print management capabilities help reduce unnecessary printing, saving on paper, toner, and overall operational costs.

### – Regulatory Compliance

ControlSuite supports compliance with industry regulations by ensuring secure, traceable document handling. For industries such as healthcare, finance, and legal services, this compliance feature is invaluable for meeting legal requirements and avoiding fines.

### – Scalable and Flexible

ControlSuite's compatibility with various platforms and applications allows for seamless integration and expansion as business demands evolve.

---

# Enable safe control printing operations with **Tungsten SafeCom**

Tungsten SafeCom is a world-class print management solution for controlling access to multi-function printer (MFP) and single-function print devices while reducing costs and improving workflow efficiency. It works by consolidating and standardizing printing processes, allowing employees to print anytime, anywhere, and from any device.

SafeCom features secure pull printing, encryption, and document tracking, ensuring sensitive information remains protected. With robust print management tools, SafeCom enables businesses to enforce rules-based printing, integrate with payment solutions, and support mobile print functionality. By partnering with ORDigiNAL, you can offer your clients cutting-edge solutions like Tungsten SafeCom, accompanied by additional advantages. With over two decades of expertise in workflow optimization and print management, we are well-equipped to meet your needs.

## Key Features of Tungsten SafeCom:

Tungsten SafeCom provides powerful tools to secure and optimize printing workflows, including secure pull printing, document encryption, user authentication, and detailed tracking and reporting. It supports integration with payment solutions, mobile printing, and advanced features like rules-based printing and secure document release, ensuring compliance and efficiency for businesses of all sizes.

## Tungsten SafeCom: Built on Trusted Print Management Expertise.

Tungsten SafeCom goes beyond basic printing operations. It provides advanced features like secure pull printing, document encryption, and rules-based printing to optimize and safeguard your document workflows. Whether you need to protect sensitive data, manage print access, or track and analyze usage, Tungsten SafeCom streamlines your processes, saving time and reducing costs.

We understand that every organization has its own unique requirements and security challenges. That's why Tungsten SafeCom is fully customizable to meet the needs of industries such as finance, healthcare, and education. Designed to integrate seamlessly into any print environment, it evolves with your business to ensure secure, efficient, and reliable operations.

---

### The benefits:

- **Secure Pull Printing**  
Send your documents to the SafeCom printer server and securely retrieve them from any device at any time. This ensures sensitive information stays protected while enabling flexible and efficient printing.
  - **Authentication**  
Users must authenticate themselves before accessing devices, ensuring only approved individuals can use company MFPs and printers. This feature prevents misuse and protects against unauthorized access.
  - **Document Encryption**  
Tungsten SafeCom encrypts documents to safeguard them during transmission over the network. This protects sensitive data from being intercepted or compromised.
  - **Tracking and Reporting**  
Gain full visibility into your organization's print, copy, and scan activities with detailed tracking and reporting. This feature helps monitor usage, optimize workflows, and reduce costs.
-



# The missing piece to complete your cloud migration: **Printix by Tungsten Automation**

Printix is for IT organizations, who are dedicated to implementing an all-cloud strategy and looking to transition their print infrastructure to a cloud service.

With Printix it's possible to install, use and maintain a cloud-managed printing environment quickly and efficiently without owning a print server. The Printix multi-tenant public cloud solution drastically simplifies the provisioning, management and control of printers and drivers from a cloud-based portal.

Apart from minimizing the on-premise IT infrastructure to support printing, Printix helps IT managers avoid the hassle and minimize costs typically associated with printing and maintaining a print environment.

Printix removes the administrative complexities involved in managing diverse hardware, software, computer operating systems and vendor-specific printer requirements.

Orchestrating and automating routine admin tasks, Printix helps discover, define and configure print queues and drivers and automatically distribute the setup, to keep your print environment running and up to date.

## Optimize Cloud Integration and Implementation.

Microsoft Azure, and other cloud computing platforms, allows businesses to be more efficient and printing should be one of the most basic business processes, to be simplified with the cloud.

Printix is seamlessly integrated with Azure AD and Google Workspace authentication to enable a true cloud workspace with Single Sign-On via Office 365 or Google Workspace.

Deploying Printix is made easy with Microsoft End-Point Manager, or any other software deployment tool that supports Microsoft Installer (MSI).

Our powerful cloud technology and innovative client technology is scalable by design and can handle any number of users and printers.

---

### Key benefits:

- **Serverless Architecture.**  
Eliminate print servers and create a secure, cloud managed print infrastructure.
  - **Simplify Print Management.**  
Simple to manage and easy to deploy. Automatic updates and self-service provisioning.
  - **Improve Productivity.**  
Intelligent print driver selection and print queue installation by location, group or self-service.
  - **Reduce Costs by 50% or more.**  
Significantly reduce on-premise infrastructure costs, services, support and maintenance fees.
  - **Single Sign-On Secure Access.**  
Single Sign-On and secure access to Printix using Microsoft Azure AD or Google Workspace.
  - **Supports all Network Printers.**  
Independent and multi-vendor support. Print to any printer from any device.
  - **Capture and workflow.**  
Deliver scanned documents from printer or phone to common workflow destinations.
-

# YSoft SAFEQ Print Management Suite: A Comprehensive Solution for Modern Print Environments

In today's dynamic business landscape, managing a print environment can become increasingly complex, especially following mergers or acquisitions. Additionally, organizations are constantly seeking ways to reduce print service costs. The YSoft SAFEQ Print Management Suite is designed to address these challenges, providing robust support for both in-office and remote workers.

## Comprehensive Support and Deployment Flexibility.

YSoft SAFEQ ensures your success with comprehensive support, project management, and optional companion hardware. This suite is designed to keep your print services agile, cost-effective, and user-friendly. Whether you choose to deploy on-premises, in a private data center, or a hybrid of both, YSoft SAFEQ can be easily tailored to meet your specific needs.

## Centralized Management and Scalability.

The YSoft SAFEQ Print Management Suite offers centralized print management and document capture capabilities, allowing seamless scalability as your environment evolves. Equipped with the necessary tools, your team can achieve significant cost savings, enhance document security, and boost workflow productivity. The suite also provides the reporting and compliance features needed to demonstrate value to company management.

## Companion Hardware.

Y Soft stands out as a print management provider by offering a comprehensive solution that enhances the user experience. Y Soft designs, manufactures, and quality tests all companion hardware, ensuring seamless integration and support from a single supplier. Notably, many competitive print management providers also utilize Y Soft companion hardware.

## Global Support.

YSoft SAFEQ is renowned for its excellent global support, offering both direct and indirect support options. Direct support involves Y Soft personnel working with you on any issue, while indirect support is provided by your printer provider or a Y Soft certified reseller. Multiple support packages are available to meet diverse needs. For complex print environments, the GOE Framework may be employed. This proven set of processes and tools ensures that your expected ROI is realized and that projects are delivered on time and within budget throughout the Discover, Design, and Deploy stages, along with ongoing support.

---

### Key benefits:

- **Visibility and Control of Print Services.** Understanding which groups are printing the most and at what cost is crucial for optimization. YSoft SAFEQ's reporting tools enable you to make informed decisions based on actual usage data. This insight helps identify the most cost-efficient printers for large black-and-white print jobs and those best suited for high-quality color printing.
  - **Improved Security and Data Privacy.** Security is a top priority in print services. YSoft SAFEQ ensures controlled access to multifunction devices (MFDs) through approved identity verification. Only authenticated users can release print jobs, preventing unauthorized access and ensuring that no print jobs are left unattended in the output tray, thereby safeguarding data privacy.
  - **Automated Scan Workflows.** YSoft SAFEQ simplifies scan workflows, enhancing productivity, accuracy, and consistency. Documents are securely delivered to predefined destinations, such as cloud document repositories or vertical market applications. The suite also supports scan-to-email and networked folder options, ensuring flexibility and security in document handling.
  - **Forecasting and Reducing Costs.** With detailed usage data at your disposal, you can accurately forecast print costs and make informed decisions about the number of MFDs required.
-

# YSoft SAFEQ Cloud Revolutionizes Document Workflows

SafeQ Cloud is a cutting-edge, cloud-based print-and-scan solution designed to simplify and enhance office document workflows. By eliminating the need for traditional print servers, it provides centralized management, automated administration, and seamless security adherence, making office printing and scanning effortless for both users and IT teams. With high availability and support when and where you need it, SafeQ Cloud delivers a modern SaaS experience tailored for today's workplace.

SafeQ Cloud not only streamlines document handling but also enhances security with advanced data protection features and compliance capabilities. The solution reduces IT helpdesk workload, eliminates common printing issues, and ensures efficient resource use. By partnering with ORdigiNAL, you can offer your clients innovative solutions like YSoft SafeQ Cloud, backed by decades of expertise in workflow and document management. We're committed to helping your business deliver efficient, secure, and future-ready printing and scanning solutions.

## SafeQ Cloud: Built for Modern Printing and Scanning.

SafeQ Cloud goes beyond traditional print management. It offers advanced capabilities like seamless cloud migration, secure document handling, and user-friendly printing from any device, anywhere. Whether you need to strengthen security, reduce IT overhead, or empower users with flexible printing options, SafeQ Cloud transforms document workflows to save time and enhance productivity.

We recognize that every organization has unique needs and challenges. That's why SafeQ Cloud is fully adaptable to fit various industries, from education and healthcare to enterprise-level corporations. Designed to evolve with your operations, SafeQ Cloud ensures ongoing efficiency, security, and resilience in your print and scan environment.

## SafeQ Cloud Advanced Features.

SafeQ Cloud is built to revolutionize document workflows with features that empower both IT teams and end-users. It allows organizations to seamlessly migrate their print infrastructure to the cloud, providing enhanced security, flexibility, and efficiency. With a focus on resilience, SafeQ Cloud ensures your IT infrastructure is secure and ready to handle challenges in an ever-changing landscape.

---

### Key features:

- **Seamless Cloud Migration:**  
Quickly and seamlessly transition your print infrastructure to the cloud, with an architecture that adapts to your needs at any stage of your cloud journey.
  - **Enhanced Security and Resilience:** Make your IT infrastructure robust and secure, ready to withstand vulnerabilities and uncertain scenarios.
  - **Flexible Printing Options:**  
Empower users to print effortlessly from any device, at any location, to any printer in seconds—eliminating reliance on IT support.
  - **IT Efficiency and Focus:**  
Free your IT team from the complexities of print management, allowing them to concentrate on driving core business priorities. Single Sign-On Secure Access Single Sign-On and secure access to Printix using Microsoft Azure AD or Google Workspace.
-

# Enhance Efficiency with Intelligent Document Capture with **Tungsten eCopy ShareScan**

Tungsten eCopy ShareScan is a comprehensive document capture solution that integrates seamlessly with your existing infrastructure, including multifunction devices (MFDs) and mobile platforms. It enables users to efficiently capture, process, and route both paper-based and electronic documents into digital workflows, enhancing collaboration and operational efficiency.

With built-in connectors to various line-of-business applications, document management systems, and collaboration platforms, eCopy ShareScan streamlines the process of digitizing documents and routing them to their appropriate destinations. Features such as document preview, type-ahead lookups, and the rapPID™ “remember me” function provide an intuitive user experience, allowing for quick setup of scanning profiles directly from the MFD interface.

## eCopy ShareScan: Built for Seamless Digital Workflows.

Tungsten eCopy ShareScan transforms the way businesses manage their document lifecycles. By enabling secure document capture, processing, and routing, it eliminates the bottlenecks of manual workflows. Whether converting scanned documents into editable formats, integrating with Microsoft Office 365, or creating customized workflows, eCopy ShareScan streamlines operations to save time and reduce costs. We understand that every organization faces unique challenges in document management. That's why Tungsten eCopy ShareScan is designed to adapt to industries like finance, healthcare, and legal, providing tailored solutions that boost productivity and ensure compliance. As businesses evolve, eCopy ShareScan evolves alongside them, delivering scalable, reliable, and efficient document solutions.

## Tungsten eCopy ShareScan Features:

Tungsten eCopy ShareScan empowers businesses with intuitive tools to securely capture, process, and route documents. Features like advanced document processing, seamless integration with Microsoft Office 365, and customizable workflows streamline the transition from paper to digital workflows, enhancing productivity and compliance across the enterprise.

---

### Key benefits:

- **MFD Client/User Interface.**  
Enjoy an intuitive embedded MFD interface with a full-size keyboard and an interactive touch screen. Simplify document capture and enhance user experience at the device.
  - **Security and Compliance.**  
Secure your documents with Microsoft Active Directory authentication, single sign-on (SSO) support, file encryption, tracking, and audit trails. Meet compliance requirements while safeguarding sensitive information.
  - **Integration With Microsoft Office 365.** Seamlessly integrate with Office 365 to convert scanned documents into editable Microsoft Office formats and directly connect to Outlook, OneDrive, and SharePoint for efficient collaboration.
  - **Document Processing.**  
Harness scalable, server-based file conversion to create searchable PDFs, JPEGs, or TIFFs. Enjoy advanced image processing features, such as redaction, highlighting, and support for SmartForms, ensuring streamlined workflows and high-quality outputs.
-

# Optimize Workflows with Enterprise-Ready Scanning with Tungsten Capture

Tungsten Capture is a robust, enterprise-ready document capture platform designed to streamline how organizations manage and process information. By capturing content from both paper and electronic sources, Tungsten Capture transforms data into actionable, accurate information that seamlessly integrates with your critical business workflows, applications, and systems.

The platform offers unparalleled scalability, accommodating everything from departmental needs to high-volume, enterprise-wide operations. With over 140 connectors to leading ECM, ERP, and BPM systems, Tungsten Capture ensures efficient data export and integration into platforms like Microsoft®, Oracle®, Hyland®, and OpenText®. From centralized office locations to remote desktops and mobile devices, Tungsten Capture enables consistent, secure, and efficient processing of documents. Features like cognitive document automation further enhance productivity by automating document classification, separation, and data extraction—reducing manual effort and errors.

By partnering with ORdigiNAL, you gain access to cutting-edge solutions like Tungsten Capture, backed by decades of expertise in document automation and digital transformation. We're committed to helping your business simplify document management, boost productivity, and optimize operational efficiency.

## Tungsten Capture: A Platform Built for Enterprise Efficiency.

Tungsten Capture redefines document processing with its robust capabilities and intelligent automation. Whether you need to transform physical documents into actionable data, automate classification and extraction, or ensure seamless integration with critical business systems, Tungsten Capture provides the tools to optimize your operations at every level.

We recognize that every industry—from finance and healthcare to manufacturing and government—faces unique challenges. Tungsten Capture is fully customizable to meet these specific requirements, whether you're processing high-volume invoices, sensitive client data, or regulatory forms. Its modular design allows for scalable deployment, ensuring the solution grows alongside your organization while consistently improving efficiency and accuracy. Tungsten Capture is designed to streamline workflows, enhance productivity, and provide reliable, actionable insights, helping you stay ahead in a rapidly evolving digital landscape.

---

### Key features:

- **System Integration.** Tungsten Capture connects to over 140 line-of-business applications, including ECM, ERP, BPM, and workflow solutions, ensuring seamless data export to critical systems.
  - **Process-Ready Automation.** Powered by Tungsten VRS® technology, the platform automatically cleans, rotates, crops, and straightens documents, preparing them for accurate data extraction.
  - **Customizable Flexibility.** Tailor your document processing with optional modules for document separation, forms extraction, and postal mail scanning—all without the need for complex scripting.
  - **Automatic Learning and Adaptation.** With Tungsten Transformation®, the solution learns unique document types for automated classification, separation, and data extraction, improving efficiency and reducing manual intervention.
-

# Comprehensive, Intelligent Scanning Made Simple with Tungsten Express

Tungsten Express™ is a powerful, all-in-one document scanning solution designed to streamline the digitization of paper documents. With high-speed batch scanning, real-time image display, and advanced features like barcode detection and automated indexing, it makes converting stacks of paper into actionable digital content effortless. Its built-in VirtualReScan® (VRS) technology ensures optimal image quality, reducing errors and simplifying the entire process.

Tungsten Express not only improves business workflows by enabling fast and reliable document scanning but also enhances compliance and records management. The solution supports seamless export to over 100 backend systems, including Microsoft SharePoint® and various electronic content management platforms, ensuring quick and organized data retrieval.

## Tungsten Express: Revolutionizing Document Scanning and Management.

Tungsten Express offers a comprehensive, high-speed document scanning solution that goes beyond traditional paper-to-digital conversion. With features like streamlined rescanning, advanced bar code handling, and VRS (VirtualReScan®) technology, it ensures your scanning workflows are faster, more accurate, and hassle-free. Whether you're processing large volumes of documents or managing smaller batches, Express enhances efficiency and minimizes manual intervention.

We understand that businesses across various industries need adaptable solutions for managing their document workflows. That's why Tungsten Express is designed to be both user-friendly and highly customizable, catering to the specific needs of sectors like finance, healthcare, legal, and more. It's a solution that evolves with your business, ensuring maximum productivity and a seamless document management experience.

## Tungsten Express Advanced Features.

Tungsten Express provides intelligent tools to simplify and enhance your document scanning workflows. From streamlined rescanning to advanced bar code handling, it ensures fast and reliable digitization of paper documents. Its powerful VRS (VirtualReScan®) technology guarantees superior image quality, reducing errors and improving the efficiency of your scanning processes.

---

### Key features:

- **Streamlined Rescanning**  
Tungsten Express simplifies the rescanning process by allowing point-and-click corrections for specific pages with issues like folded corners or sticky notes, avoiding the need to rescan entire batches.
  - **Flexible Document Grouping**  
Boost productivity by scanning documents in batches. Tungsten Express automatically separates files into individual groups using patch codes, bar codes, or blank pages, eliminating manual sorting.
  - **VRS Quality Corrections**  
Ensure optimal image quality with VRS technology. Documents requiring adjustments are flagged for correction, enabling clear, legible scans without needing a complete rescan.
  - **Advanced Bar Code Handling**  
Tungsten Express reads 1D and 2D bar codes—even those partially obscured by handwriting, stamps, or stains—ensuring accurate decoding and improved scanning efficiency.
-

# A Patented Image Enhancement Platform for Document Processing **Tungsten VRS**

Tungsten VRS™ is a cutting-edge image enhancement platform that revolutionizes document scanning and processing workflows. By automatically adjusting scanner settings and enhancing image quality, VRS Elite™ helps organizations significantly reduce manual document preparation time and improve the accuracy of scanned data. It ensures that every scanned document is of the highest quality, making it ideal for automated document extraction and business intelligence applications.

With Tungsten VRS, businesses no longer need to rely on experts to configure scanner settings or worry about poor-quality, skewed, or unreadable images. VRS Elite streamlines the scanning process by automatically detecting and applying the appropriate settings, ensuring that images are clean, sharp, and ready for OCR (optical character recognition) and ICR (intelligent character recognition) software. This leads to faster, more efficient processing and minimizes costly rescans.

## Tungsten VRS: Revolutionizing Document Scanning and Image Quality.

Tungsten VRS goes beyond basic image enhancement. It offers advanced features like automatic image correction, blank page deletion, and color detection, all designed to improve the quality and efficiency of your document scanning processes. Whether you're working with mixed document types, large batches, or remote scanning environments, Tungsten VRS simplifies your workflows, ensuring high-quality scans every time, without manual intervention.

We recognize that each industry faces unique challenges when it comes to document management and processing. That's why Tungsten VRS is adaptable to a wide range of sectors, from finance and healthcare to legal and government. The solution is built to grow with your needs, continuously improving productivity and accuracy while reducing costs associated with document handling and rescans.

---

### Key features:

Tungsten VRS™ offers an array of powerful features designed to enhance document scanning and image quality. Whether you're dealing with single-sided or double-sided documents, VRS Elite streamlines the scanning experience, reducing manual intervention and saving time.

- **No Customization Required.**  
Provides excellent image quality straight out of the box, saving time and boosting productivity by eliminating the need for manual adjustments.
  - **Blank Page Deletion.**  
Automatically identifies and removes blank pages from single-sided and double-sided scans, improving workflow efficiency.
  - **Color Detection and Smoothing.**  
Seamlessly detects both color and black-and-white documents without the need for manual sorting and normalizes background colors for consistent, clear images.
  - **Network-Friendly Images.**  
Reduces background noise and shadowed areas, producing ultra-compact images that are optimized for fast retrieval and display.
-



# Ensure Security and Compliance in Document Capture with Dr.Connect

Every organisation recognises the significant volume of paper and electronic documents that need to be managed. Dr. Connect simplifies the process of converting these documents and forms into formats that seamlessly integrate with your business applications or document management system (DMS), making it as effortless as possible for your organisation to handle document distribution.

## Streamlined Document Capture.

Dr. Connect's connectors transform your Multifunctional scanning and printing devices (MFDs) into user-friendly document capture portals for all your ad-hoc documents.

- Seamless integration: Connect your MFDs to Dr. Connect and enable one-touch scanning for easy indexing and filing directly from your desktop.
- Efficient profiling and routing: Scan, profile, and route documents directly from the MFDs, utilising instant database look-ups to ensure accurate and swift integration with your back-end systems.
- Enhanced user experience: With Dr. Connect, users can easily identify themselves, navigate through the intuitive interface, and capture documents effortlessly, reducing manual handling and streamlining the capture process.

## Rapid Conversion of Documents.

Dr. Connect empowers your organisation to quickly convert paper and electronic documents, speeding up document processing and improving productivity.

- Automated indexing: Utilise intelligent indexing features to automatically extract relevant information from documents, minimising manual data entry and reducing errors.
- Instant database look-ups: Leverage real-time database queries to retrieve relevant information, allowing for seamless integration with your back-end systems.
- Direct integration: Dr. Connect enables direct delivery of converted documents into your business applications or DMS, eliminating the need for manual handling and improving document accessibility.

Dr. Connect seamlessly integrates with your existing office equipment and back-end systems, leveraging your current investments and infrastructure.

Dr. Connect ensures the utmost security and compliance in document capture and integration, protecting sensitive information and meeting regulatory requirements.

---

### Key benefits:

- **Enhanced Efficiency:** Dr. Connect's connectors enable rapid conversion of paper and electronic documents into formats that seamlessly integrate with your business applications or document management system.
  - **Optimal Utilisation of Existing Office Equipment:** Maximise the value of your investment in MFDs and streamline document capture processes without the need for additional hardware or software.
  - **Streamlined Document Workflow:** The solution offers one-touch scanning, indexing, and filing options, enabling seamless integration with back-end systems and providing instant access to relevant databases for efficient document processing.
  - **Improved Productivity and Accuracy:** The solution facilitates accurate indexing, filing, and routing of documents, eliminating time-consuming manual tasks and enabling employees to focus on more value-added activities.
  - **Enhanced Security and Compliance:** sensitive information is protected during the document capture process, adhering to industry standards and regulations.
-



# Connectyx – Revolutionizing Document Processing for Streamlined Business Operations

Connectyx offers innovative connectors that revolutionise document processing, helping businesses streamline their operations and enhance efficiency. Our connectors seamlessly integrate with existing systems, automating document handling and transforming the way organisations manage their information. Let's explore the key features and benefits of Connectyx connectors.

## Seamless Integration with Existing Systems.

Connectyx connectors seamlessly integrate with your current systems, such as document management software or enterprise resource planning (ERP) platforms. This eliminates the need for manual data entry or transferring documents between different systems, saving time and reducing errors. Achieve a unified and efficient document processing workflow by leveraging the power of integration.

## Streamlined Workflow and Collaboration.

Connectyx connectors streamline document workflows, ensuring seamless collaboration between different teams or departments. Facilitate document sharing, approval processes, and version control, enhancing productivity and reducing bottlenecks. Improve transparency and visibility by providing real-time status updates and notifications throughout the document processing lifecycle.

## Automated Document Handling.

Connectyx connectors automate document handling processes, enabling efficient capture, extraction, indexing, and routing of documents. Reduce manual intervention and human errors by automating repetitive tasks, such as data entry or sorting documents. Improve productivity and accuracy by ensuring documents are processed in a consistent and standardized manner.

## Enhanced Data Extraction and Validation.

Connectyx connectors leverage advanced data extraction and validation capabilities to accurately extract relevant information from documents. Validate and verify data against predefined rules or external databases, ensuring data accuracy and integrity. Enable intelligent data extraction by utilizing optical character recognition (OCR) and machine learning technologies.

---

### Key benefits:

- **Streamlined Document Processing:**

Connectyx connectors streamline document handling processes, reducing manual intervention and improving overall efficiency.

- **Increased Productivity:**

By automating repetitive tasks and eliminating manual data entry, Connectyx connectors free up valuable time for employees to focus on more strategic and value-added activities.

- **Enhanced Accuracy:**

Connectyx connectors leverage advanced data extraction and validation capabilities to ensure accurate and reliable information extraction from documents.

- **Improved Collaboration:**

With seamless integration and streamlined workflows, Connectyx connectors enable smooth collaboration between teams and departments, promoting effective communication and reducing bottlenecks.

- **Enhanced Security and Compliance:**

Connectyx connectors prioritise data security and compliance by implementing robust security measures, protecting sensitive information, and ensuring adherence to industry regulations and standards.

---

# Automate Invoice Processing with Tungsten AP Essentials

Tungsten AP Essentials is a powerful accounts payable automation solution designed to simplify and accelerate invoice processing. With its advanced optical character recognition (OCR) technology and cloud-based architecture, AP Essentials enables organizations to capture, classify, and validate invoices from any source or format—whether they arrive via email, postal mail, EDI, or online portals.

This comprehensive solution integrates seamlessly with existing financial systems, automating the entire invoice processing workflow from capture to approval. By eliminating manual data entry and leveraging configurable business rules and approval workflows, Tungsten AP Essentials reduces errors, improves efficiency, and ensures compliance with evolving regulations.

With features like self-learning technology, advanced analytics, and robust security measures, AP Essentials adapts to your business needs while maintaining enterprise-grade security. Accessible 24/7, this cloud-based platform ensures uninterrupted access and scalability, making it suitable for businesses of all sizes. By partnering with ORdigiNAL, you can bring the power of Tungsten AP Essentials to your clients, supported by our expertise in financial process automation and digital transformation. Together, we enable businesses to streamline their accounts payable processes, improve supplier relationships, and achieve operational excellence.

## Tungsten AP Essentials: revolutionizing invoice processing.

Tungsten AP Essentials goes beyond basic invoice processing. It automates the capture, validation, and approval of invoices with unparalleled precision, using advanced cognitive capture and machine learning technologies. Whether managing paper invoices, PDFs, or electronic formats, Tungsten AP Essentials simplifies and streamlines your accounts payable processes, saving you time and reducing errors.

We recognize that every business and industry has unique requirements. That's why Tungsten AP Essentials is designed to be flexible and adaptable, meeting the needs of sectors like finance, retail, manufacturing, and more. With features like robust analytics, multi-language and currency support, and seamless ERP integration, Tungsten AP Essentials evolves with your workflows to ensure continuous efficiency, compliance, and productivity.

---

### Features:

Tungsten AP Essentials is designed to optimize invoice workflows with features like advanced analytics, automated approval processes, and intelligent line-item matching. By reducing manual intervention and IT overhead, it enables businesses to process invoices faster, mitigate errors, and enhance supplier relationships, all while maintaining compliance with global invoice processing standards.

- **Increased Data Accuracy.**  
Leverages cognitive capture technology to extract and validate financial data with exceptional precision, reducing the risk of errors and ensuring reliable reporting.
  - **Intelligent Line Item Extraction.**  
Machine learning enhances line-item matching for highly efficient 2-way and 3-way invoice matching, improving accuracy over time.
  - **Robust Analytics.**  
Pre-built dashboards provide visibility into invoice status and exceptions, offering actionable insights to continuously optimize processes.
  - **Configurable Approval Workflows.**  
Streamline invoice processing with user-driven approval and exception workflows, including assisted GL coding and automated rule-based validation.
-



# Enfocus Switch – Affordable & flexible automation

## Automation without developing.

Enfocus Switch is an automation platform aimed at simplifying repetitive tasks in print, publishing, and graphic design workflows. It allows users to build automated workflows that can manage tasks like file sorting, preflighting, color correction, PDF creation, and file distribution across various platforms. Switch works seamlessly with numerous third-party applications and is compatible with well-known design software such as Adobe Creative Suite and PDF preflight tools, so users can automate intricate tasks across different file types and formats.

Thanks to its drag-and-drop interface, Enfocus Switch is user-friendly for those without a development background, making it easier to establish custom workflows. This boosts productivity and minimizes errors in document and print production processes. By automating these tasks, Enfocus Switch aids organizations in saving time, enhancing accuracy, and maintaining consistency in output, making it an essential tool for businesses that handle high-volume document processing or print production.

## Why choose Enfocus Switch?

Enfocus Switch is perfect for businesses of all sizes in the print, publishing, and graphic design industries. Whether you're a small design agency aiming to improve your processes or a large printing company handling intricate production workflows, Switch offers exceptional value. Enfocus Switch goes beyond just automation; it empowers your business to reach its full potential. Its adaptable, scalable, and user-friendly design makes it an essential tool for organizations seeking to enhance their workflows.

At ORdigiNAL, we take pride in being your reliable partner for Enfocus Switch. Our team of specialists offers extensive support, including technical help, training, and customized solutions to ensure you maximize your investment. Whether you're using Switch for the first time or expanding your current operations, we're here to assist you every step of the way.

---

### Key benefits:

**Switch is an affordable, easy-to-use, highly versatile automation platform. It is as simple to get started with as an out-of-the-box, GUI tool, while packing the automation punch of a full team of developers.**

- **Easy-to-use.**  
Automate incrementally – learn and grow your platform capabilities over time. Switch is modular, affordable, and cost-effective.
  - **Make Connections.**  
To keep things simple, Switch provides simplified connectivity through apps for many leading tools in production, data manipulation, and more.
  - **Go off Script.**  
Enjoy limitless possibilities – whether you need connectivity, messaging, data exchange, logic, or anything else, Switch scripting can automate it.
  - **Future ready.**  
With Enfocus Switch, you'll see immediate effect including better margins, happier employees, higher quality, and much greater productivity.
-

# The benefits of SignDoc for your business

Convenient and trustworthy e-signing is an essential building block of your digital transformation strategy.

Improving your organization's performance means finding new ways to boost process efficiency and engage with both new and existing customers. Reducing paper usage for contracts, approvals, and other business documents helps cut costs and provide a positive customer experience.

Moving away from wet-ink signature processes is an integral part of digital transformation that helps businesses achieve these key performance goals:

- **Reduce operational costs:** Decrease paper usage for print-ship-scan processes
- **Speed time to closure:** Cut time needed to complete contracts or approvals from days to minutes
- **Improve customer satisfaction:** Transform your customer experience using the communications channel of their choice—on any device, anytime, anywhere
- **Stay compliant:** Improve compliance by providing a traceable, end-to-end audit trail of all process steps and transactions
- **Operate securely:** Mitigate risk of external or internal fraud attempts and help avoid litigation

## Electronic signature with SignDoc®.

Leading organizations worldwide in banking, insurance, healthcare, manufacturing, retail and many other industries rely on SignDoc for easy and secure digital transactions.

SignDoc offers the benefits of trustworthy and convenient paperless signing for a wide variety of functions including customer and employee onboarding, procurement, account management, service documentation, payroll and finance.

---

### Use SignDoc to:

- Deliver substantial evidence of approval and adoption of a document's contents and its binding, conclusive, nonrepudiable character.
  - Enable the validation of authenticity and integrity of signed documents by providing a means to authenticate a signer's identity as well verify that the document has not been altered after signing.
  - Easily send documents and get them signed online from anywhere using a browser or mobile device.
  - Keep track of your documents waiting for signatures and automatically send reminders.
  - Extend your existing customer facing applications or apps with e-signature capabilities signature électronique.
-

# TotalAgility – Transforming Workflow Automation with AI-Driven Innovation

Tungsten TotalAgility® is revolutionizing workflow automation by harnessing the power of advanced Artificial Intelligence to streamline complex, content-heavy processes while delivering real-time business insights. By seamlessly integrating generative AI, document processing, and process orchestration, TotalAgility enhances operational efficiency, drives productivity, and improves both user experience and financial outcomes.

Designed to cater to a wide range of industries—such as banking, insurance, healthcare, supply chain, and the public sector—TotalAgility automates key processes, from customer onboarding to claims management, enabling businesses to accelerate their workflows and achieve greater efficiency.

The Tungsten Marketplace further extends the capabilities of TotalAgility, offering a rich selection of pre-built solutions that broaden its use cases. This flexibility allows businesses to deploy TotalAgility in a variety of environments—whether in public or private cloud infrastructures or on-premises—ensuring the solution seamlessly integrates with any organizational setup.

## Generative AI Copilots: Unlocking a New Era of Automation.

TotalAgility's Generative AI-powered Copilots are reshaping how businesses interact with automation. These intelligent tools are designed to complement human capabilities, not replace them. With an intuitive, conversational interface, TotalAgility's Copilots enable users at any technical skill level to quickly realize the value of automation, gain actionable insights, and boost developer productivity.

In addition, TotalAgility provides effortless integration with a variety of Large Language Models (LLMs), such as ChatGPT, OpenAI, Azure OpenAI, or custom LLMs, offering businesses the flexibility to tailor their automation experience to their specific needs.

By embracing TotalAgility's AI-driven innovation, organizations can unlock the full potential of workflow automation, making processes more efficient, insightful, and impactful than ever before.

### Key features:

- Generative AI-powered Copilots
- Industry leading document intelligence
- Low code process orchestrator
- Document library
- Flexible cloud deployment
- Case management
- Rules management
- Analytics and business insights

### Benefits:

- **Enhanced Operational Efficiency and Quality:**  
By adopting TotalAgility's unified intelligent automation platform, organizations experience a 41% improvement in operational efficiency and quality.
- **Increased Productivity and Proficiency:**  
A powerful automation platform drives employee productivity and proficiency, which is critical for 86% of customers seeking intelligent automation solutions.
- **Data Security and Regulatory Compliance:**  
TotalAgility ensures data security and compliance by automating compliance monitoring and standardizing processes, enhancing governance and security across the organization.
- **Revenue Growth:**  
Intelligent automation helps businesses unlock new opportunities, leading to a 45% increase in revenue and driving business growth.
- **Cost Savings:**  
Save up to 38% on costs by streamlining operations and enhancing efficiency, contributing to stronger financial health and sustainability.

# DocuWare: Advanced Solutions for Document Management and Workflow Automation

DocuWare provides comprehensive document management and workflow automation solutions that empower businesses to streamline processes, enhance productivity, and secure their data. With flexible deployment options—cloud, on-premises, and hybrid—DocuWare adapts to diverse business environments, offering scalable functionality for organizations of all sizes. Here's a detailed overview of DocuWare's products, core features, and benefits.

## Document Capture and Organization.

- **Centralized Storage:** DocuWare's file cabinets allow businesses to store all types of documents—scans, emails, PDFs, Microsoft Office files—into searchable, structured archives accessible from any device.
- **Automated Indexing:** DocuWare's Intelligent Indexing feature learns from user input to automatically tag and categorize documents, saving time and improving searchability.
- **Document Capture:** DocuWare captures documents from various sources, including scans, emails, and mobile devices, making information immediately available for processing.

## Powerful Search and Access.

- **Flexible Search Capabilities:** Users can search by keywords, full-text, or custom tags. DocuWare also integrates with applications like Outlook, SAP, and Teams for seamless data retrieval.
- **Mobile Accessibility:** With DocuWare's mobile app, employees can access, approve, and manage documents on the go, ensuring productivity outside the office.
- **Document Viewing and Editing:** The DocuWare Viewer allows users to open, annotate, and share documents within a secure interface, maintaining document integrity.

## Workflow Automation and Task Management.

- **Workflow Manager:** DocuWare's Workflow Manager automates complex processes, such as invoice approvals and HR tasks, using multi-level decision points and condition-based triggers.
- **Task Lists and Notifications:** The Task Manager organizes information into lists and sends alerts, ensuring that employees stay on top of their pending tasks and deadlines.

## Integration and Flexibility

- **Seamless Integration:** DocuWare connects with various IT ecosystems, including CRM and ERP platforms, to facilitate data exchange and synchronization.
- **Deployment Options:** Available as a cloud, on-premises, or hybrid solution.

---

### The benefits:

- **Enhanced Productivity.**  
DocuWare reduces manual workloads, freeing employees to focus on higher-value tasks.
  - **Improved Data Security and Compliance.**  
DocuWare's strict access controls and data encryption protect confidential information, while audit-ready logging meets regulatory standards across various industries.
  - **Cost Efficiency.**  
By reducing reliance on paper-based processes and manual document handling, DocuWare lowers operational costs.
  - **Better Collaboration and Accessibility.**  
With mobile access and centralized file cabinets, DocuWare promotes collaboration across teams, ensuring that employees have access to the latest versions of documents, whether in-office or remote.
  - **Scalability and Adaptability.**  
DocuWare's hybrid model and integration with popular applications make it highly adaptable for businesses of all sizes and structures.
-

# The leading PDF software built for professionals: Tungsten Automation Power PDF Business

Power PDF™ is the perfect document management tool for all business users—a single product that's easy to use for simple tasks, and robust enough to handle the most demanding requirements.

With a Microsoft® Office-style ribbon, Power PDF Business provides ease-of-use familiarity enhanced by customer input over twenty years. The Quick Access Toolbar lets you conveniently create shortcuts to features and capabilities.

## Superior document conversion accuracy saves time and effort.

The latest OmniPage OCR delivers peak performance in converting PDFs and scanned files to Microsoft Office. Find quicker results in two ways: pinpoint text accuracy on poor images saves time proofreading, and superior format accuracy reduces manual effort in correcting headers, footers, numbering, tables and more.

## SignDoc® delivers complete electronic signature functionality within Power PDF.

SignDoc integrates directly into Power PDF, delivering end-to-end electronic signatures and verification with no separate web application required, improving efficiency and security (separate purchase is required for full integration).

## Don't labor over PDF conversion to Microsoft Office.

Converting the text and then spellcheck quickly fixes text errors. Don't worry about formatting errors—Power PDF vastly boosts productivity by delivering the finest format fidelity in Microsoft Word®, Excel® and PowerPoint®.

## Utilize latest PDF security and enterprise rights management.

Protect PDFs with password permission and certificate security controls up to 256-bit AES encryption. Support for Microsoft Information Protection Services and Microsoft Azure Rights Management Services.

## Redact sensitive information and remove metadata.

Dependable and flexible redaction via pattern search and metadata scrubbing to protect confidential information.

---

### Key benefits:

- Work intuitively in a familiar Microsoft Office-style user interface.
  - Create PDF documents compliant with the latest PDF 2.0 and PDF/A-4 standards.
  - Convert all PDF files to Microsoft Office with best-in-industry text and format recognition.
  - Convert static to fill-able PDF forms in a single click.
  - Scan paper documents and in one step, render as Searchable PDF
  - Assemble documents from Microsoft Office and image files via page preview selection.
  - Edit text and images with ease Employ the latest PDF security up to 256-bit AES High Security encryption.
  - View, markup and sign PDFs on iOS and Android mobile devices.
-



# PitStop Pro – Unleash the Power of PDF Prepress Tools

Enfocus PitStop, the industry-leading prepress software designed to empower your PDF production process.

## Streamline Your Workflow:

PitStop's intelligent preflight engine scans and analyses PDF files, detecting potential issues and providing automated corrections. Save time and eliminate errors by ensuring that your files meet industry standards and printer requirements.

- Enhance efficiency and accuracy by automating preflight checks and corrections
- Convert your spoken words into precise text with exceptional speed and accuracy.
- Enjoy near-instantaneous transcription, saving you valuable time and effort.

## Ensure Print Perfection:

Advanced Editing Tools: PitStop offers a comprehensive set of editing tools, allowing you to modify PDF content, adjust colours, add or remove objects, and fix common prepress errors. Maintain complete control over your PDF files and make precise adjustments with ease.

- Take complete control over your PDF files and make accurate modifications with a range of powerful editing tools.
- Achieve cost savings and accurate colour reproduction by managing ink coverage effectively.
- Increase efficiency and accuracy by automating common prepress tasks with PitStop's ready-to-use action lists.

## Seamless Integration:

Effortlessly integrate Dragon Professional into your preferred applications and workflows, dictating directly into popular productivity tools for a smooth transition and enhanced efficiency.

- Effortlessly integrate Dragon Professional with your preferred applications and workflows.
- Dictate directly into popular productivity tools such as Microsoft Office, email clients, and more.
- Enjoy seamless compatibility and a smooth transition into your existing work environment.

## Unleash Your PDF Potential:

PitStop's advanced quality control features provide comprehensive PDF analysis, including font validation, colour space verification, and transparency handling. Ensure consistent output quality and resolve potential issues before they impact your final printed or digital materials.

### The benefits:

- **Enhanced Efficiency:** PitStop's automated preflighting and correction capabilities help you save time and effort by streamlining your PDF production process. Detect and resolve errors quickly, ensuring that your files are print-ready without the need for manual intervention.
- **Error Reduction:** With PitStop's advanced quality control features, you can ensure that your PDF files meet industry standards and specifications. Validate fonts, colours, transparency, and other critical elements to achieve consistent output quality and avoid surprises during the printing or digital distribution process.
- **Cost savings:** By automating prepress tasks, such as ink coverage control and PDF optimisation, PitStop helps reduce production costs. Efficient ink management leads to lower ink consumption, while optimized PDF files reduce file sizes, saving storage space and facilitating faster file transfers.
- **Flexibility and Compatibility:** PitStop seamlessly integrates with popular design and prepress applications, providing you with a flexible and compatible workflow. Whether you work with Adobe Acrobat or Adobe InDesign, PitStop's integration ensures a smooth transition and allows you to leverage its powerful features within your preferred design environment.



# Manage projects on any device, anywhere with **Bluebeam**

Bluebeam construction software gives teams the flexibility to collaborate from anywhere during design, build and delivery. Bluebeam's desktop and cloud collaboration solutions are built on open standards, so you can seamlessly access documents and data on any web or iOS device, on-premises or off-premises.

## Bluebeam Revu.

Revu offers powerful, highly customizable document management, formatting and automation tools with a built-in collaboration space, Studio.

- Log in to any desktop where Revu is installed and access your projects and toolsets.
- Mark and measure together with teammates in real time using Studio
- Share the latest drawings and documents with teams in the field using Bluebeam Cloud
- Increase security and simplify user login with single sign-on (SSO)

## Bluebeam Cloud.

Connect office and field and complete workflows on the go with Bluebeam Cloud, the new suite of web and mobile solutions that connect seamlessly with your documents and toolsets in Revu.

- Work from anywhere via the web or an iOS device - no setup or setup required
- Seamlessly access your toolsets and Studio Project files from within Revu
- Easily invite team members to markup and collaborate in real time with the Markup Editor
- Effortlessly manage field inspections, RFIs and submissions on the go with Field Tools

## Services.

Get more from Revu and Bluebeam Cloud with built-in services designed to help you get the job done faster:

- Unlimited secure centralized cloud storage (as part of Studio and Bluebeam Cloud)
- Access integrations to support custom workflows
- Access to Bluebeam University training courses at no extra cost
- Detailed user activity tracking, reporting and data insight
- Geolocation insights to help visualize, connect and organise data

---

### The benefits:

- **Access work anywhere.**  
Store entire projects in the cloud, invite teammates to collaborate digitally in real time, and access plans and drawings from any web or iOS device in the office or field.
  - **Effortless communication.**  
Communicate changes with standard markup and measurement tools. All updates are tracked, preserving important project data that you can share with anyone, anywhere.
  - **Hiring teams faster.**  
Gain administrative control with simplified self-serve license management and deployment. Get everyone up to speed on key features and workflows with Bluebeam University training at no extra cost.
-